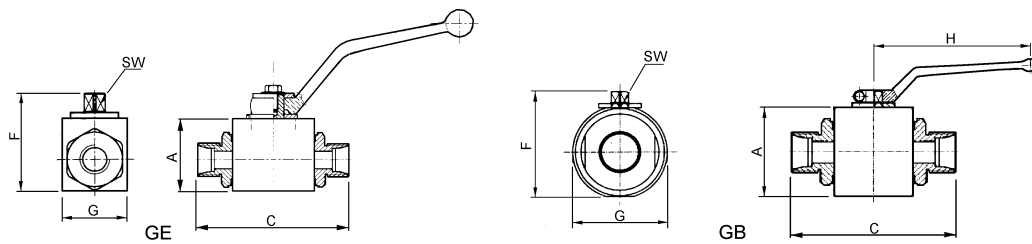




## 2 way ball valve for tube fitting connection ( 2 fixing holes )



Type	Druk		Technische Informatie / Specifications							
	Pression	DN	A	C	F	G	H	SW		
KHV 6 L	500	6	35	76	49	30	110	9		
KHV 8 L	500	6	35	76	49	30	110	9		
KHV 10 L	500	10	40	76	54	35	110	9		
KHV 12 L	500	10	40	77	54	35	110	9		
KHV 15 L	500	13	43	86	57	37	110	9		
KHV 18 L	500	13	43	86	57	37	110	9		
KHV 22 L	400	20	55	108	73	45	180	14		
KHV 28 L	350	25	65	115	83	55	180	14		
KHV 35 L	350	25	65	115	83	55	180	14		
KHV 42 L	350	25	65	115	83	55	180	14		
KHV 8 S	500	6	35	76	49	30	110	9		
KHV 10 S	500	6	35	76	49	30	110	9		
KHV 12 S	500	10	40	76	54	35	110	9		
KHV 14 S	500	10	40	77	54	35	110	9		
KHV 16 S	500	13	43	86	57	37	110	9		
KHV 20 S	500	13	43	86	57	37	110	9		
KHV 25 S	400	20	55	108	73	45	180	14		
KHV 30 S	350	25	65	115	83	55	180	14		
KHV 38 S	350	25	65	115	83	55	180	14		



