



## Brake cylinders

---

### Brake cylinders with spring



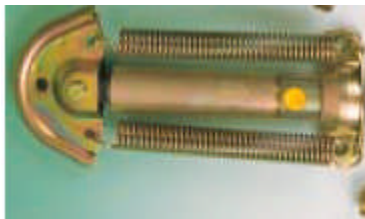
Rod diameter	Stroke
25 mm	90 mm
25 mm	75 mm
25 mm	95 mm
30 mm	90 mm
30 mm	75 mm

### Brake cylinders without spring



Rod diameter	Stroke
25 mm	100 mm
30 mm	100 mm

### Brake cylinders with 2 external springs





## Power Transmission

### ***'Dual Supply' hydraulic/pneumatic***

Pneumatic brake chambers are combined with hydraulic displacement cylinders to give the operator a choice of hydraulic or pneumatic service brakes. Both units incorporate internal return springs.



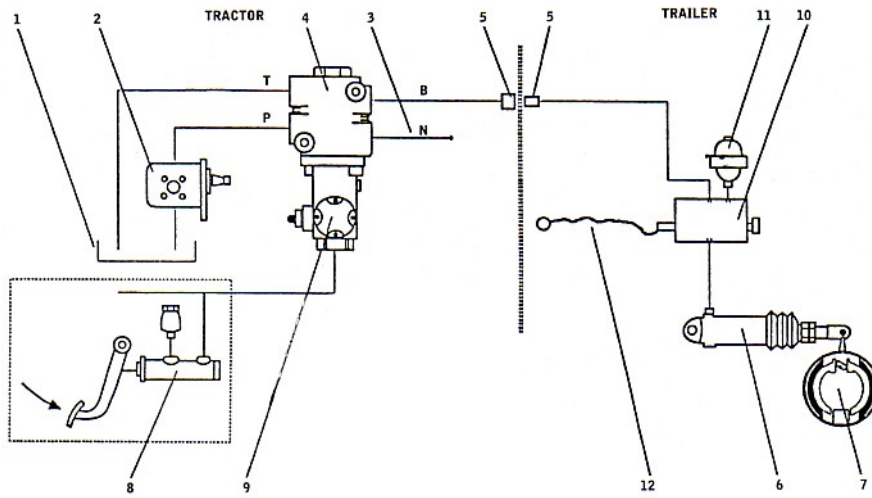
Airchamber	Rod diameter	Stroke
T16	25 mm	75 mm
T20	25 mm	75 mm
T24	25 mm	75 mm
T16	30 mm	60 mm
T20	30 mm	60 mm
T24	30 mm	60 mm
T24	35 mm	60 mm



# Power Transmission

## Hydraulic brakevalve

---

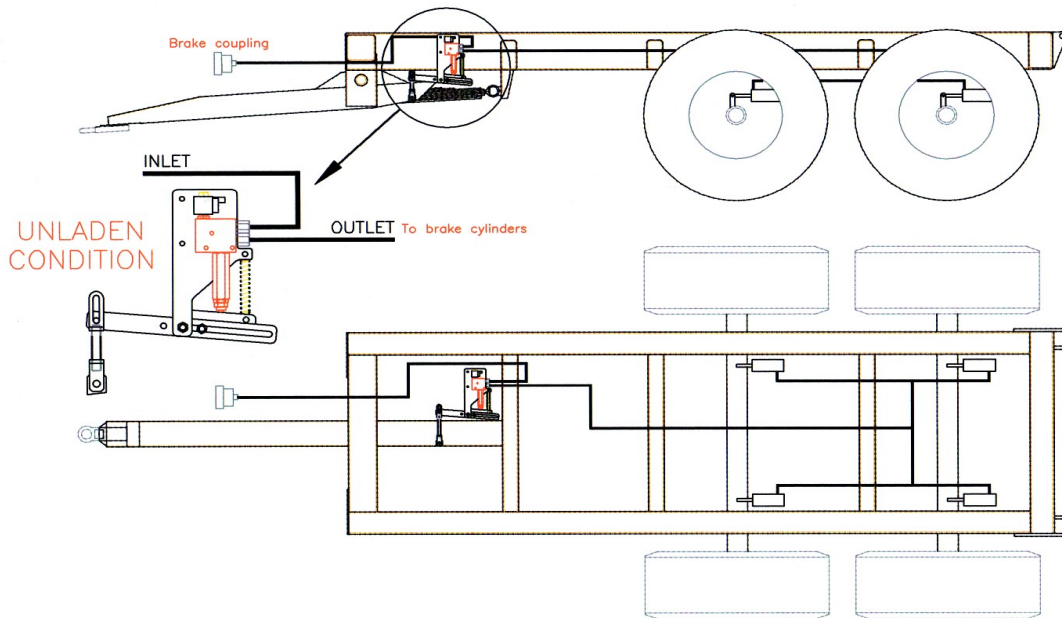




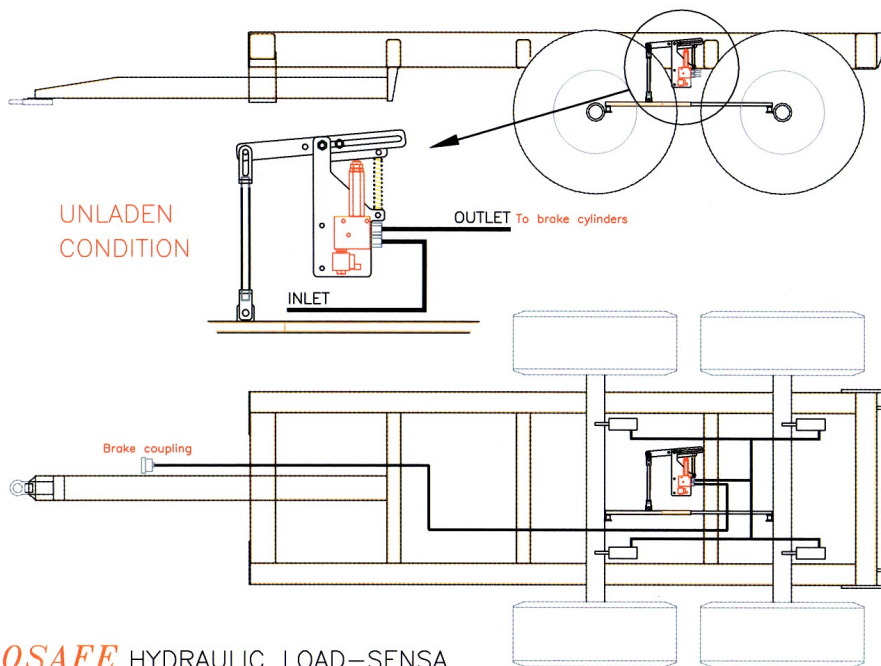
# Power Transmission

## Load-sensing

---



**EUROSAFE** HYDRAULIC LOAD-SENSA



**EUROSAFE** HYDRAULIC LOAD-SENSA