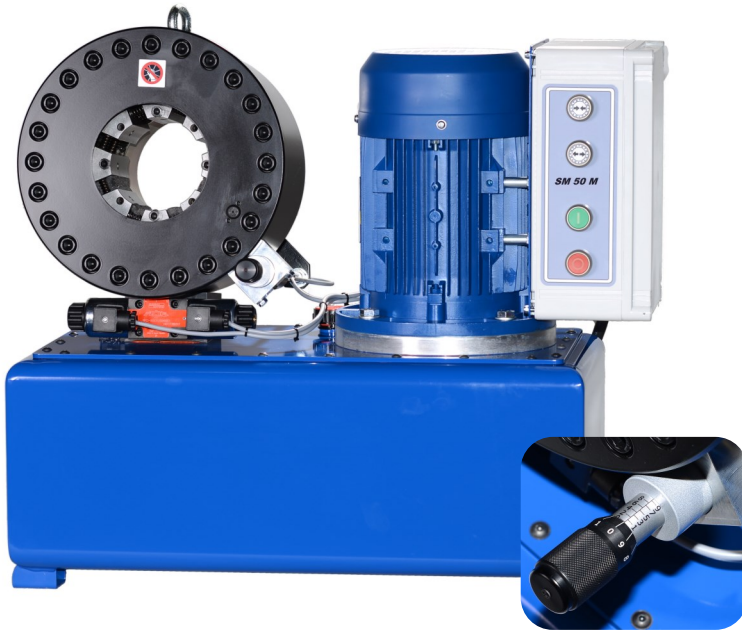


# SM 50 M



**STANDARD DIE SETS**

	<b>Range (mm)</b>	<b>Length</b>
<b>38-06</b>	6-16	45
<b>38-08</b>	8-18	45
<b>38-11</b>	11-21	45
<b>38-14</b>	14-24	45
<b>38-17</b>	17-27	45
<b>38-20</b>	20-30	55
<b>38-23</b>	23-33	55
<b>38-26</b>	26-36	55
<b>38-30</b>	30-40	75
<b>38-34</b>	34-44	75
<b>38-39</b>	39-49	85
<b>38-45</b>	45-55	85
<b>38-51</b>	51-61	85
<b>38-57</b>	57-67	90
<b>38-63</b>	63-73	90
<b>38-67</b>	67-77	90
<b>With master dies</b>	75-85	105

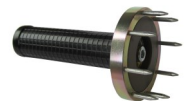
**TECHNICAL SPECIFICATIONS**

<b>Max hose size</b>	2" 2 SN, 1 1/2" 4 SH
<b>Crimping force (kN):</b>	1800
<b>Max crimping Ø (mm):</b>	85
<b>Max opening (mm):</b>	die diameter + 32
<b>Standard motor:</b>	3 kW 380V 3-Ph
<b>Control</b>	Micrometer
<b>Master dies opening / Length(mm):</b>	107/105
<b>Crimping range (mm):</b>	6 – 85
<b>Weight (kg)</b>	148 (without oil)
<b>Dimensions (LxWxH mm)</b>	710 x 440 x 650
<b>Quick Change-set</b>	Optional
<b>Stand for machine</b>	Optional

**OPTIONS**



Quick Change Set: including storage rack & handle



Solid stand with ability to mount the Quick Change set and machine