

# SM 38 EC/SC



**STANDARD DIE SETS**

	<b>Range (mm)</b>	<b>Length</b>
<b>38-06</b>	6-8	45
<b>38-08</b>	8-11	45
<b>38-11</b>	11-14	45
<b>38-14</b>	14-17	45
<b>38-17</b>	17-20	45
<b>38-20</b>	20-23	55
<b>38-23</b>	23-26	55
<b>38-26</b>	26-30	55
<b>38-30</b>	30-34	75
<b>38-34</b>	34-39	75
<b>38-39</b>	39-45	85
<b>38-45</b>	45-51	85
<b>38-51</b>	51-61	85

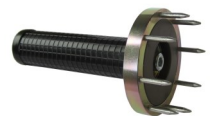
**TECHNICAL SPECIFICATIONS**

<b>Max hose size</b>	1 1/2" 2 SN, 1 1/4" 4SH
<b>Crimping force (kN):</b>	1650
<b>Max crimping Ø (mm):</b>	61
<b>Max opening (mm):</b>	die diameter + 32
<b>Standard motor:</b>	4 kW 380V 3-Ph
Different voltage versions available	
<b>Control</b>	EC control SC control
<b>Master dies opening / Length(mm):</b>	105/105
<b>Crimping range (mm):</b>	6 – 61
<b>Weight (kg)</b>	157 (without oil)
<b>Dimensions (LxWxH mm)</b>	640 x 565 x 640
<b>Quick Change-set</b>	Optional
<b>Foot pedal</b>	Optional (only for SC version)
<b>Stand for machine</b>	Optional

**OPTIONS**



Quick Change Set: including storage rack & handle



Solid stand with ability to mount the Quick Change set and machine



Foot pedal only for SC version