

Joy-sticks

Joysticks
Poignées

Joy-stick met drukknop en schakelaar



Joysticks with button and switch (with fitting)

Poignée boîtiers de commande électrique (livrée avec raccord)

Part n°	DESCRIPTION	€
EE1B		
EE1D		

Ergonomische joy-stick



Ergonomique joystick

Poignée ergonomique

Part n°	BUTTONS NR.	€
EEI2B	2	*
EEI3B	3	*
EEI4B	4	*
EEI6B	6	*
EEI8B	8	*

Cobra joy-stick



Cobra joystick

Poignée cobra

Part n°	BUTTONS NR.	€
EC1B	1	
EC2B	2	
EC3B	3	
EC4B	4	
EC8BI	8+1	

Ergonomische joy-stick met grote drukknoppen



Ergonomic joystick with big buttons

Poignée ergonomique avec boutons grands

Part n°	DESCRIPTION	BUTTONS NR.	€
EE2BI			
EE3BI			
EE4BI			
EE5BI			
EE6BI			
EE8BI			

Joy-sticks en potentiometers

Electric control lever and Potentiometers
Manipulateurs électriques et Potentiomètres

Joy-stick 2 posities



Control lever 2 functions
Manipulateurs 2 positions

Part n°	DESCRIPTION	€
M2P-1E1M		
M2P-2E		
M2P-2M		

Joy-stick 4 posities



Control lever 4 functions
Manipulateurs 4 positions

Part n°	DESCRIPTION	€
M4P-1E3M		
M4P-4E		
M4P-4M		

Schakelaars



Lever switch
Interrupteurs a levier

Part n°	DESCRIPTION	€
IP-1E1M		
IP-2E		
IP-2M		

Potentiometers



Potentiometers
Potentiomètres

Part n° Referencia	DESCRIPTION DESCRIPCIÓN	€
POTENTIEMETER		

Polyester box



Polyester box
Boîte en polyester

Part n°	DESCRIPTION	€
CM190X75	190mm x 75mm x 75mm	

Ventielen

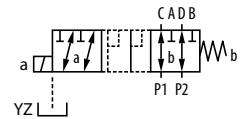
Directional valves

Déviateurs

Electrov. 6 weg 3/8"



Direct cont. valve 6 ways 3/8"
Déviateurs 6 voies 3/8"

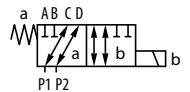


Part n°	THREAD	WAYS NR.	VOLTAGE (V)	MAX. FLOW (l/min)	MAX. PRESSURE (bar)	€
KV-6/2-6-DC-G3/8 MR	3/8" BSP	6	12 VDC	50	250	
KV-6/2-6-24DC-G3/8 MR	3/8" BSP	6	24 VDC	50	250	
KV-6/2-6-48DC-G3/8MR	3/8" BSP	6	48 VDC	50	250	
KV-6/2-6-110AC-G3/8MR	3/8" BSP	6	110 VAC	50	250	
KV-6/2-6-AC-G3/8 MR	3/8" BSP	6	220 VAC	50	250	

Elect. 6 weg lateraal 3/8"



Direct cont. valve lateral 6 ways 3/8"
Déviateurs 6 voies lateral 3/8"

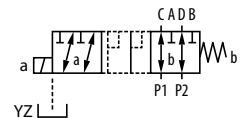


Part n°	THREAD	WAYS NR.	VOLTAGE (V)	MAX. FLOW (l/min)	MAX. PRESSURE (bar)	€
KV-6K/2-6-DC-3/8 MR	3/8" BSP	6	12 VDC	50	250	
KV-6K/2-6-24DC-G3/8MR	3/8" BSP	6	24 VDC	50	250	
KV-6K/2-6-48DC-G3/8MR	3/8" BSP	6	48 VDC	50	250	
KV-6K/2-6-110AC-G3/8MR	3/8" BSP	6	110 VAC	50	250	
KV-6K/2-6-AC-G3/8 MR	3/8" BSP	6	220 VAC	50	250	

Elect. 6 weg samenbouw 3/8"



Stackable direct cont. valve 6 ways 3/8"
Déviateurs 6 voies empilable 3/8"

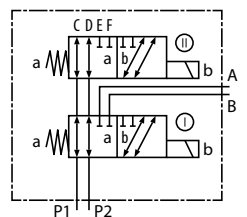


Part n°	THREAD	WAYS NR.	VOLTAGE (V)	MAX. FLOW (l/min)	MAX. PRESSURE (bar)	ELEMENTS NR.	€
KVH-6/2-6-DC-3/8-N1	3/8" BSP	6	12 VDC	50	250	1	
KVH-6/2-6-DC-3/8-N2	3/8" BSP	6	12 VDC	50	250	2	
KVH-6/2-6-DC-3/8-N3	3/8" BSP	6	12 VDC	50	250	3	
KVH-6/2-6-DC-3/8-N6	3/8" BSP	6	12 VDC	50	250	6	
KVH-6/2-6-48-DC-3/8-N1	3/8" BSP	6	48 VDC	50	250	1	

Electrov. 8 weg 3/8"



Direct cont. valve 8 ways 3/8"
Déviateurs 8 voies 3/8"



Part n°	THREAD	WAYS NR.	VOLTAGE (V)	MAX. FLOW (l/min)	MAX. PRESSURE (bar)	€
KV-8/3-6-DC-G3/8MR	3/8" BSP	8	12 VDC	50	250	
KV-8/3-6-24DC-G3/8MR	3/8" BSP	8	24 VDC	50	250	
KV-8/3-6-48DC-G3/8MR	3/8" BSP	8	48 VDC	50	250	
KV-8/3-6-110AC-G3/8MR	3/8" BSP	8	110 VAC	50	250	
KV-8/3-6-AC-G3/8 MR	3/8" BSP	8	220 VAC	50	250	

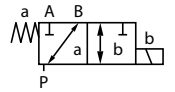
Ventielen

Directional valves
Déviateurs

Electrov. 3 weg 1/2"



Direct. control valve 3 ways 1/2"
Elect.selecteur 3 voies 1/2"

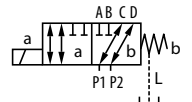


Part n°	THREAD	WAYS NR.	VOLTAGE (V)	MAX. FLOW (l/min)	MAX. PRESSURE (bar)	€
KVC-3/2-10-41B-12DC1/2	1/2" BSP	3	12 VDC	60	250	
KVC-3/2-10-41B-24DC1/2	1/2" BSP	3	24 VDC	60	250	

Electrov.6 weg CETOP 5 1/2"



Dir.contr.valve 6 ways CETOP 5 1/2"
Elect.select.6 voies CETOP 5 1/2"

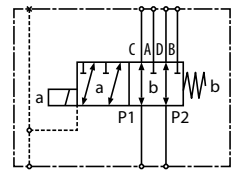


Part n°	THREAD	WAYS NR.	VOLTAGE (V)	MAX. FLOW (l/min)	MAX. PRESSURE (bar)	€
KV-6/2-10-DC-G1/2 MR	1/2" BSP	6	12 VDC	120	350	
KV-6/2-10-24DC-G1/2MR	1/2" BSP	6	24 VDC	120	350	
KV-6/2-10-48DC-G1/2MR	1/2" BSP	6	48 VDC	120	350	
KV-6/2-10-110AC-G1/2MR	1/2" BSP	6	110 VAC	120	350	
KV-6/2-10-AC-G1/2 MR	1/2" BSP	6	220 VAC	120	350	

Electrov. 6 weg 1/2" samenbouw



Dir.contr.valve 6 ways 1/2" stackable
Elect.select.6 voies 1/2" empilable



Part n°	THREAD	WAYS NR.	VOLTAGE (V)	MAX. FLOW (l/min)	MAX. PRESSURE (bar)	ELEMENTS NR.	€
KVH-6/2-10-DC-1/2-N1	1/2" BSP	6	12 VDC	120	350	1	
KVH-6/2-10-DC-1/2-N2	1/2" BSP	6	12 VDC	120	350	2	
KVH-6/2-10-DC-1/2-N3	1/2" BSP	6	12 VDC	120	350	3	
KVH-6/2-10-24-DC-1/2-N1	1/2" BSP	6	24 VDC	120	350	1	
KVH-6/2-10-48-DC-1/2-N1	1/2" BSP	6	48 VDC	120	350	1	

Spoelen

Coils
Bobines

Spoelen NG6



Coil NG6
Bobines NG6

Part n°	VOLTAGE (V)	POWER (W)	€
MR-6-12CC	12 VDC	29	
MR-6-24CC	24 VDC	29	
MR-6-48CC	48 VDC	29	
MR-6-24CA	24 VAC	29	
MR-6-48CA	48 VAC	29	
MR-6-110CA	110 VAC	29	
MR-6-220CA	220 VAC	29	

Spoelen NG10

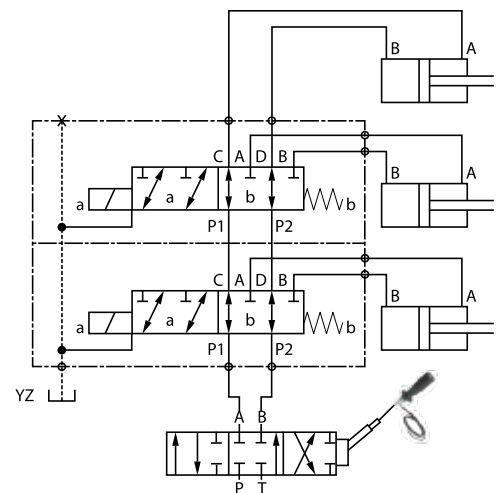


Coil NG10
Bobines NG10

Part n°	VOLTAGE (V)	POWER (W)	€
MR-10-12CC	12 VDC	45	
MR-10-24CC	24 VDC	45	
MR-10-48CC	48 VDC	45	
MR-10-24CA	24 VAC	45	
MR-10-48CA	48 VAC	45	
MR-10-110CA	110 VAC	45	
MR-10-220CA	220 VAC	45	

HYDRAULIC PROJECT DESIGN

Service according to your needs



Omschakelventiel

Hydraulic inverters
Inverseurs hydrauliques

Omschakelventiel

Hydraulic inverters
Inverseurs hydrauliques



Part n°	SIZE	MAX. FLOW (l/min)	€
PKV-6	NG-6	25	
PKV-10	NG-10	60	

