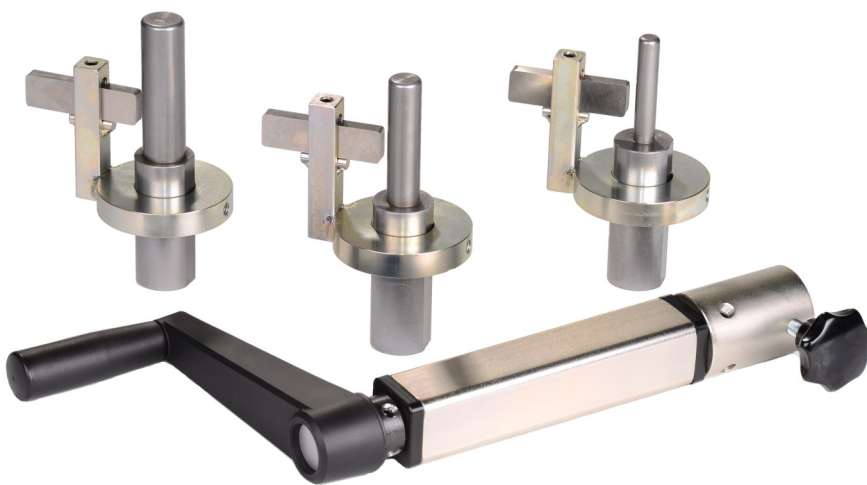


HS 50 M

SKIVING HEADS



Skiving heads sold separately

External size	Range (mm)
3/16"	0-55
1/4"	0-55
5/16"	0-55
3/8"	0-55
1/2"	0-55
5/8"	0-55
3/4"	0-55
1"	0-55 / 55-90
1 1/4"	0-55 / 55-90
1 1/2"	0-55 / 55-90
2"	50-90

Internal size	Range
3/8"	adjustable ↔
1/2"	adjustable ↔
5/8"	adjustable ↔
3/4"	adjustable ↔
1"	adjustable ↔
1 1/4"	adjustable ↔
1 1/2"	adjustable ↔
2"	adjustable ↔

TECHNICAL SPECIFICATIONS

Max hose size	2" (internal & external)
Control	Manual
Weight (kg)	2,25
Dimensions (LxWxH mm)	415 x 235 x 50

WWW.DHYDRO.COM