

SM 32 MC



STANDARD DIE SETS

	RANGE (mm)	LENGHT
32-06	6-8	40
32-08	8-11	40
32-11	11-14	40
32-14	14-17	40
32-17	17-20	40
32-20	20-23	45
32-23	23-26	50
32-26	26-31	50
32-31	31-34	55
32-34	34-39	60
32-39	39-45	60
32-43	43-45	65
32-45	45-55	65

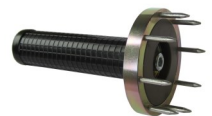
TECHNICAL SPECIFICATIONS

Max hose size	1 1/4" 2SN, 1" 4SP
Crimping force (kN):	1450
Max crimping Ø (mm):	55
Max opening (mm):	die diameter + 20
Standard motor:	2,2kW 380V 3-Ph
Different voltage versions available	
Control	Manual vernier
Master dies opening / Length(mm):	90/66
Crimping range (mm):	6 – 55
Weight (kg)	110 (without oil)
Dimensions (LxWxH mm)	640 x 430 x 590
Quick Change-set	Optional
Stand for machine	Optional

OPTIONS



Quick Change Set: including storage rack & handle



Solid stand with ability to mount the Quick Change set and machine