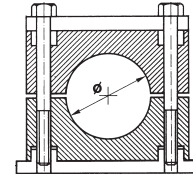
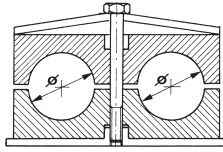
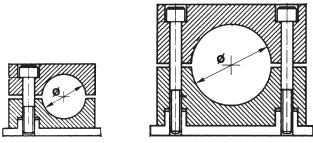




staffe e collari per fissare tubi  
clamps for all clamping applications

# Programma di produzione Production program

gruppo **0** gruppo **1 ÷ 6**  
group



collari serie standard standard clamps			
gruppo - group	diametro tubo pipe diameter		
	Ø mm	foro nominale nominal bore	Ø pollici inch. O.D.
0	6		
	8		5/16"
	10	G 1/8"	
	12		
1	6		
	6,4		1/4"
	8		5/16"
	9,5		3/8"
	10	G 1/8"	
2	12,7		1/2"
	13,5	G 1/4"	
	14		
	15		
	16		5/8"
	17,2	G 3/8"	
	18		
	19		3/4"
3	19		3/4"
	20		
	21,3	G 1/2"	
	22		7/8"
	25		
4	25,4		1"
	26,9	G 3/4"	
	28		
	30		
	32		1 1/4"
5	32		1 1/4"
	33,7	G 1"	
	35		
	38		1 1/2"
	42		
6	42,4	G 1 1/4"	
	44,5		1 3/4"
	48,3	G 1 1/2"	
	50,8		2"

collari doppi double clamps			
gruppo - group	diametro tubo pipe diameter		
	Ø mm	foro nominale nominal bore	Ø pollici inch. O.D.
1	6		
	6,4		1/4"
	8		5/16"
	9,5		3/8"
	10	G 1/8"	
2	12,7		1/2"
	13,5	G 1/4"	
	14		
	15		
	16		5/8"
	17,2	G 3/8"	
	18		
3	19		3/4"
	20		
	21,3	G 1/2"	
	22		7/8"
	25		
	25,4		1"
4	26,9	G 3/4"	
	28		
	30		
	32		1 1/4"
	33,7	G 1"	
5	35		
	38		1 1/2"
	40		
	42		
	42,4	G 1 1/4"	

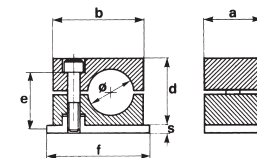
collari serie pesante heavy duty clamps							
gruppo - group	diametro tubo pipe diameter			gruppo - group	diametro tubo pipe diameter		
	Ø mm	foro nominale nominal bore	Ø pollici inch. O.D.		Ø mm	foro nominale nominal bore	Ø pollici inch. O.D.
1	6			5	65		
	6,4		1/4"		70		2 3/4"
	8		5/16"		75		
	9,5		3/8"		76,1	G 2 1/2"	3"
	10	G 1/8"			80		
	12				82,5		3 1/4"
	12,7		1/2"		88,9	G 3"	3 1/2"
	13,5	G 1/4"			88,9	G 3"	3 1/2"
	14				100		
	15				101,6	G 3 1/2"	4"
2	16		5/8"	6	108		4 1/4"
	17,2	G 3/8"			114,3	G 4"	4 1/2"
	18				127	G 4 1/2"	5"
	19		3/4"		133		5 1/2"
	20				133		5 1/4"
	21,3	G 1/2"			139,7	G 5"	5 1/2"
	22		7/8"		152,4	G 5 1/2"	6"
	25				165		6 1/2"
	25,4		1"		168,3	G 6"	
	26,9	G 3/4"			168,3	G 6"	
3	28			7	177,8		7"
	30				193,7		7 5/8"
	32		1 1/4"		216		8 1/2"
	33,7	G 1"			219,1	G 8"	
	35						
	38		1 1/2"				
	40						
	42						
	42,4	G 1 1/4"					
4	38		1 1/2"	8			
	42						
	42,4	G 1 1/4"					
	44,5		1 3/4"				
	48,3	G 1 1/2"					
	50						
	50,8		2"				
	55						
	57		2 1/4"				
	60,3	G 2"					
63,5		2 1/2"					
65							
70		2 3/4"					

**Collari serie standard  
in polipropilene,  
poliammide autoestinguente,  
gomma o alluminio**

**Standard clamps  
in polypropylene,  
self-extinguishing polyamide,  
rubber or aluminium**

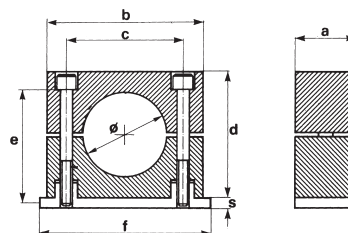
gruppo  
group

**0**



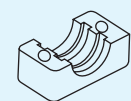
gruppo  
group

**1 ÷ 6**

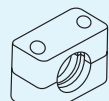


gruppo - group	diametro tubo pipe diameter			tipo di collare clamp type				dimensioni in mm dimension in mm							pezzi per confezione box quantity
	Ø mm	pollici / inches G	Ø O.D.	A polipropilene polypropylene	MA polyamide self-extinguishing	RA gomma rubber	LA alluminio aluminium	a	b	c	d	f	s	e	
0	6			A <sub>0</sub> 06	MA <sub>0</sub> 06	–	–	30	28	–	27	31,5	3	M6x20	50
	8		5/16"	A <sub>0</sub> 08	MA <sub>0</sub> 08	–	–								
	10	1/8"		A <sub>0</sub> 10	MA <sub>0</sub> 10	–	–								
	12			A <sub>0</sub> 12	MA <sub>0</sub> 12	–	–								
1	6			A <sub>1</sub> 06	MA <sub>1</sub> 06	RA <sub>1</sub> 06	LA <sub>1</sub> 06	30	34	20	27	41	3	M6x20	50
	6,4		1/4"	A <sub>1</sub> 6,4	MA <sub>1</sub> 6,4	RA <sub>1</sub> 6,4	LA <sub>1</sub> 6,4								
	8		5/16"	A <sub>1</sub> 08	MA <sub>1</sub> 08	RA <sub>1</sub> 08	LA <sub>1</sub> 08								
	9,5		3/8"	A <sub>1</sub> 9,5	MA <sub>1</sub> 9,5	RA <sub>1</sub> 9,5	LA <sub>1</sub> 9,5								
	10	1/8"		A <sub>1</sub> 10	MA <sub>1</sub> 10	RA <sub>1</sub> 10	LA <sub>1</sub> 10								
2	12,7		1/2"	A <sub>2</sub> 12,7	MA <sub>2</sub> 12,7	RA <sub>2</sub> 12,7	LA <sub>2</sub> 12,7	30	40	26	33	46	3	M6x25	50
	13,5	1/4"		A <sub>2</sub> 1/4"	MA <sub>2</sub> 1/4"	RA <sub>2</sub> 1/4"	LA <sub>2</sub> 1/4"								
	14			A <sub>2</sub> 14	MA <sub>2</sub> 14	RA <sub>2</sub> 14	LA <sub>2</sub> 14								
	15			A <sub>2</sub> 15	MA <sub>2</sub> 15	RA <sub>2</sub> 15	LA <sub>2</sub> 15								
	16		5/8"	A <sub>2</sub> 16	MA <sub>2</sub> 16	RA <sub>2</sub> 16	LA <sub>2</sub> 16								
	17,2	3/8"		A <sub>2</sub> 3/8"	MA <sub>2</sub> 3/8"	RA <sub>2</sub> 3/8"	LA <sub>2</sub> 3/8"								
	18			A <sub>2</sub> 18	MA <sub>2</sub> 18	RA <sub>2</sub> 18	LA <sub>2</sub> 18								
3	19		3/4"	A <sub>3</sub> 19	MA <sub>3</sub> 19	RA <sub>3</sub> 19	LA <sub>3</sub> 19	30	48	33	35	54	3	M6x30	50
	20			A <sub>3</sub> 20	MA <sub>3</sub> 20	RA <sub>3</sub> 20	LA <sub>3</sub> 20								
	21,3	1/2"		A <sub>3</sub> 1/2"	MA <sub>3</sub> 1/2"	RA <sub>3</sub> 1/2"	LA <sub>3</sub> 1/2"								
	22		7/8"	A <sub>3</sub> 22	MA <sub>3</sub> 22	RA <sub>3</sub> 22	LA <sub>3</sub> 22								
	25			A <sub>3</sub> 25	MA <sub>3</sub> 25	RA <sub>3</sub> 25	LA <sub>3</sub> 25								
4	25,4	1"		A <sub>3</sub> 25,4	MA <sub>3</sub> 25,4	RA <sub>3</sub> 25,4	LA <sub>3</sub> 25,4	30	57	40	42	61	3	M6x35	25
	26,9	3/4"		A <sub>4</sub> 3/4"	MA <sub>4</sub> 3/4"	RA <sub>4</sub> 3/4"	LA <sub>4</sub> 3/4"								
	28			A <sub>4</sub> 28	MA <sub>4</sub> 28	RA <sub>4</sub> 28	LA <sub>4</sub> 28								
	30			A <sub>4</sub> 30	MA <sub>4</sub> 30	RA <sub>4</sub> 30	LA <sub>4</sub> 30								
5	32		1 1/4"	A <sub>4</sub> 32	MA <sub>4</sub> 32	RA <sub>4</sub> 32	LA <sub>4</sub> 32	30	68	52	58	73	3	M6x50	25
	32		1 1/4"	A <sub>5</sub> 32	MA <sub>5</sub> 32	RA <sub>5</sub> 32	LA <sub>5</sub> 32								
	33,7	1"		A <sub>5</sub> 1"	MA <sub>5</sub> 1"	RA <sub>5</sub> 1"	LA <sub>5</sub> 1"								
	35			A <sub>5</sub> 35	MA <sub>5</sub> 35	RA <sub>5</sub> 35	LA <sub>5</sub> 35								
	38		1 1/2"	A <sub>5</sub> 38	MA <sub>5</sub> 38	RA <sub>5</sub> 38	LA <sub>5</sub> 38								
	40			A <sub>5</sub> 40	MA <sub>5</sub> 40	RA <sub>5</sub> 40	LA <sub>5</sub> 40								
	42			A <sub>5</sub> 42	MA <sub>5</sub> 42	RA <sub>5</sub> 42	LA <sub>5</sub> 42								
6	42,4	1 1/4"		A <sub>5</sub> 1 1/4"	MA <sub>5</sub> 1 1/4"	RA <sub>5</sub> 1 1/4"	LA <sub>5</sub> 1 1/4"	30	86	66	66	89	3	M6x60	25
	44,5		1 3/4"	A <sub>6</sub> 44,5	MA <sub>6</sub> 44,5	RA <sub>6</sub> 44,5	LA <sub>6</sub> 44,5								
	48,3	1 1/2"		A <sub>6</sub> 1 1/2"	MA <sub>6</sub> 1 1/2"	RA <sub>6</sub> 1 1/2"	LA <sub>6</sub> 1 1/2"								
	50,8		2"	A <sub>6</sub> 50,8	MA <sub>6</sub> 50,8	RA <sub>6</sub> 50,8	LA <sub>6</sub> 50,8								

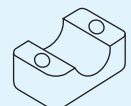
A... = polipropilene / polypropylene\* MA... = polyamide / self-extinguishing RA... = gomma / rubber LA... = alluminio / aluminium  
 ...H = interno liscio / smooth inside (per ordine di collari tipo H, aggiungere H dopo il codice / to order clamps type H, please put the H at the end of the code)



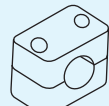
tipo normale  
interno sagomato  
normal model  
profiled inside



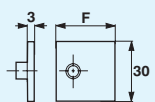
tipo normale  
interno sagomato  
normal model  
profiled inside



tipo H  
interno liscio  
H model  
smooth inside

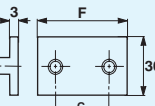


tipo H  
interno liscio  
H model  
smooth inside



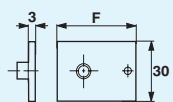
gruppo  
group

**0**



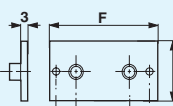
gruppo  
group

**1 ÷ 6**



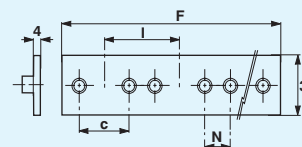
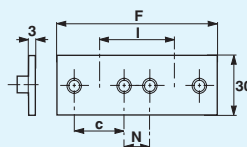
gruppo  
group

**0**



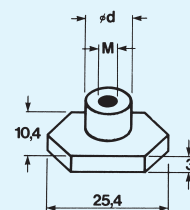
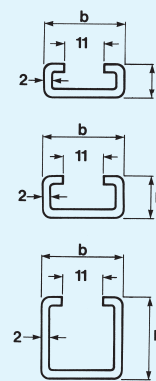
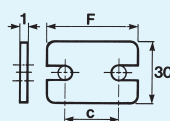
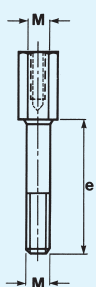
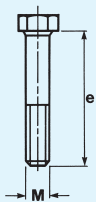
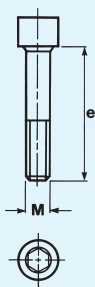
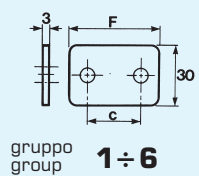
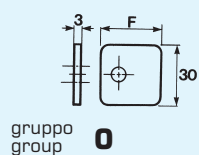
gruppo  
group

**1 ÷ 6**



semi-collare clamp-half	coppia collari clamp body (2 halves)	piastra inferiore lower plate		piastra inferiore allungata prolonged lower plate			piastra inferiore doppia double lower plate					piastra inferiore multipla multiple lower plate				
		<b>APIN</b>		<b>APIA</b>			<b>APID</b>					<b>APIM</b>				
<b>A....S</b>	<b>A....C</b>	F mm	c mm	F mm	c mm	d mm	F mm	c mm	N mm	l mm	n° collari clamps	F mm	c mm	N mm	l mm	n° collari clamps
A <sub>0</sub> 06 S	A <sub>0</sub> 06 C	<b>APIN<sub>0</sub></b>		<b>APIA<sub>0</sub></b>			<b>APID<sub>0</sub></b>					<b>APIM<sub>0</sub></b>				
A <sub>0</sub> 08 S	A <sub>0</sub> 08 C															
A <sub>0</sub> 10 S	A <sub>0</sub> 10 C	31,5	–	46	–	–	63	–	–	30	2	315	–	–	30	10
A <sub>0</sub> 12 S	A <sub>0</sub> 12 C															
A <sub>1</sub> 06 S	A <sub>1</sub> 06 C	<b>APIN<sub>1</sub></b>		<b>APIA<sub>1</sub></b>			<b>APID<sub>1</sub></b>					<b>APIM<sub>1</sub></b>				
A <sub>1</sub> 6,4 S	A <sub>1</sub> 6,4 C															
A <sub>1</sub> 08 S	A <sub>1</sub> 08 C															
A <sub>1</sub> 9,5 S	A <sub>1</sub> 9,5 C	41	20	64	20	51	82	20	20	40	2	410	20	20	40	10
A <sub>1</sub> 10 S	A <sub>1</sub> 10 C															
A <sub>1</sub> 12 S	A <sub>1</sub> 12 C															
A <sub>2</sub> 12,7 S	A <sub>2</sub> 12,7	<b>APIN<sub>2</sub></b>		<b>APIA<sub>2</sub></b>			<b>APID<sub>2</sub></b>					<b>APIM<sub>2</sub></b>				
A <sub>2</sub> 1/4" S	A <sub>2</sub> 1/4" C															
A <sub>2</sub> 14 S	A <sub>2</sub> 14 C															
A <sub>2</sub> 15 S	A <sub>2</sub> 15 C															
A <sub>2</sub> 16 S	A <sub>2</sub> 16 C	46	26	70	26	56	92	26	18	44	2	460	26	18	44	10
A <sub>2</sub> 3/8" S	A <sub>2</sub> 3/8" C															
A <sub>2</sub> 18 S	A <sub>2</sub> 18 C															
A <sub>2</sub> 19 S	A <sub>2</sub> 19 C															
A <sub>3</sub> 19 S	A <sub>3</sub> 19 C	<b>APIN<sub>3</sub></b>		<b>APIA<sub>3</sub></b>			<b>APID<sub>3</sub></b>					<b>APIM<sub>3</sub></b>				
A <sub>3</sub> 20 S	A <sub>3</sub> 20 C															
A <sub>3</sub> 1/2" S	A <sub>3</sub> 1/2" C															
A <sub>3</sub> 22 S	A <sub>3</sub> 22 C	54	33	78	33	64	108	33	19	52	2	540	33	19	52	10
A <sub>3</sub> 25 S	A <sub>3</sub> 25 C															
A <sub>3</sub> 25,4 S	A <sub>3</sub> 25,4 C															
A <sub>4</sub> 3/4" S	A <sub>4</sub> 3/4" C	<b>APIN<sub>4</sub></b>		<b>APIA<sub>4</sub></b>			<b>APID<sub>4</sub></b>					<b>APIM<sub>4</sub></b>				
A <sub>4</sub> 28 S	A <sub>4</sub> 28 C															
A <sub>4</sub> 30 S	A <sub>4</sub> 30 C	61	40	86	40	71	122	40	20	60	2	305	40	20	60	5
A <sub>4</sub> 32 S	A <sub>4</sub> 32 C															
A <sub>5</sub> 32 S	A <sub>5</sub> 32 C	<b>APIN<sub>5</sub></b>		<b>APIA<sub>5</sub></b>			<b>APID<sub>5</sub></b>					<b>APIM<sub>5</sub></b>				
A <sub>5</sub> 1" S	A <sub>5</sub> 1" C															
A <sub>5</sub> 35 S	A <sub>5</sub> 35 C															
A <sub>5</sub> 38 S	A <sub>5</sub> 38 C															
A <sub>5</sub> 40 S	A <sub>5</sub> 40 C	73	52	97	52	83	146	52	23	75	2	365	52	23	75	5
A <sub>5</sub> 42 S	A <sub>5</sub> 42 C															
A <sub>5</sub> 1 1/4" S	A <sub>5</sub> 1 1/4" C															
A <sub>5</sub> 45 S	A <sub>5</sub> 45 C															
A <sub>6</sub> 44,5 S	A <sub>6</sub> 44,5 C	<b>APIN<sub>6</sub></b>		<b>APIA<sub>6</sub></b>			<b>APID<sub>6</sub></b>					<b>APIM<sub>6</sub></b>				
A <sub>6</sub> 1 1/2" S	A <sub>6</sub> 1 1/2" C															
A <sub>6</sub> 50,8 S	A <sub>6</sub> 50,8 C	89	66	112	66	100	178	66	24	90	2	445	66	24	90	5

\* La produzione standard è di colore verde, colore nero su richiesta.  
 Standard production in green, black color on request.



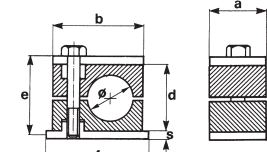
piastra superiore upper plate	vite a testa tonda esagono interno T.C.E.I. screws	vite a testa esagonale hexagonal head screw	vite a testa esag. allungata high hexeg. head screw	piastra superiore di sicurezza security upper plate	binari portanti spessore 2 mm rail	dado esagonale fissaggio binari hexagonal nut		
<b>APS</b>	<b>AVTC</b>	<b>AVTE</b>	<b>AVTEA</b>	<b>APMRS</b>	<b>ABINS</b>	<b>ADES</b>		
F mm	c mm	M	e mm	M	e mm	M	ø d mm	
<b>APS<sub>0</sub></b>	<b>AVTC<sub>0</sub></b>	<b>AVTE<sub>0</sub></b>	<b>AVTEA<sub>0</sub></b>	<b>APMRS<sub>0</sub></b>	<b>ABINS-1</b>	<b>ADES</b>		
28	—	M6 20	M6 30	M6 20			28	—
<b>APS<sub>1</sub></b>	<b>AVTC<sub>1</sub></b>	<b>AVTE<sub>1</sub></b>	<b>AVTEA<sub>1</sub></b>	<b>APMRS<sub>1</sub></b>	28		11	
37	20	M6 20	M6 30	M6 20	34		20	
<b>APS<sub>2</sub></b>	<b>AVTC<sub>2</sub></b>	<b>AVTE<sub>2</sub></b>	<b>AVTEA<sub>2</sub></b>	<b>APMRS<sub>2</sub></b>	<b>ABINS-2</b>		<b>ADES</b>	
43	26	M6 25	M6 35	M6 25	41	26		
<b>APS<sub>3</sub></b>	<b>AVTC<sub>3</sub></b>	<b>AVTE<sub>3</sub></b>	<b>AVTEA<sub>3</sub></b>	<b>APMRS<sub>3</sub></b>	<b>ABINS-3</b>	M6		12
50	33	M6 30	M6 40	M6 30	47	33	28	14
<b>APS<sub>4</sub></b>	<b>AVTC<sub>4</sub></b>	<b>AVTE<sub>4</sub></b>	<b>AVTEA<sub>4</sub></b>	<b>APMRS<sub>4</sub></b>	28	30		
57	40	M6 35	M6 45	M6 35	57	40		
<b>APS<sub>5</sub></b>	<b>AVTC<sub>5</sub></b>	<b>AVTE<sub>5</sub></b>	<b>AVTEA<sub>5</sub></b>	<b>APMRS<sub>5</sub></b>				
69	52	M6 50	M6 60	M6 50	67	52		
<b>APS<sub>6</sub></b>	<b>AVTC<sub>6</sub></b>	<b>AVTE<sub>6</sub></b>	<b>AVTEA<sub>6</sub></b>	<b>APMRS<sub>6</sub></b>				
83	66	M6 60	M6 70	M6 60	82	66		

\* Altre piastre speciali sono a pag. 20  
Other special plate are at page 20

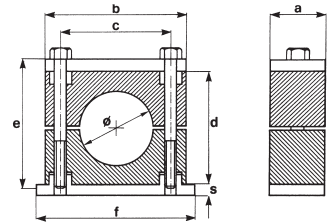
**Collari serie standard con piastra superiore in polipropilene, poliammide autoestinguente, gomma o alluminio**

**Standard clamps with upper plate in polypropylene, self-extinguishing polyamide, rubber or aluminium**

gruppo group **0**



gruppo group **1÷6**

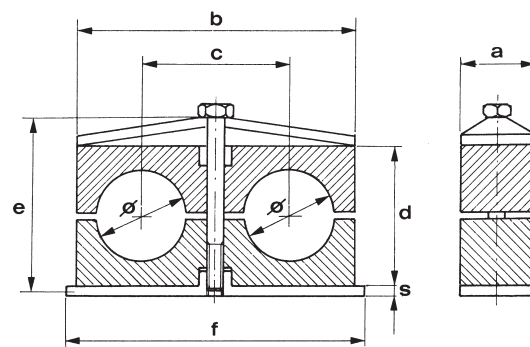


gruppo - group	diametro tubo pipe diameter			tipo di collare clamp type				dimensioni in mm dimension in mm						pezzi per confezione box quantity	
	Ø mm	pollici / inches G	Ø O.D.	A polipropilene polypropylene	MA poliammide self-extinguishing	RA gomma rubber	LA alluminio aluminium	a	b	c	d	f	s		e
0	6			A <sub>0</sub> 06 +APS	MA <sub>0</sub> 06 +APS	—	—	30	28	—	27	32	3	M6x30	50
	8		5/16"	A <sub>0</sub> 08 +APS	MA <sub>0</sub> 08 +APS	—	—								
	10		1/8"	A <sub>0</sub> 10 +APS	MA <sub>0</sub> 10 +APS	—	—								
	12			A <sub>0</sub> 12 +APS	MA <sub>0</sub> 12 +APS	—	—								
1	6			A <sub>1</sub> 06 +APS	MA <sub>1</sub> 06 +APS	RA <sub>1</sub> 06 +APS	LA <sub>1</sub> 06 +APS	30	34	20	27	42	3	M6x30	50
	6,4		1/4"	A <sub>1</sub> 6,4 +APS	MA <sub>1</sub> 6,4 +APS	RA <sub>1</sub> 6,4 +APS	LA <sub>1</sub> 6,4 +APS								
	8		5/16"	A <sub>1</sub> 08 +APS	MA <sub>1</sub> 08 +APS	RA <sub>1</sub> 08 +APS	LA <sub>1</sub> 08 +APS								
	9,5		3/8"	A <sub>1</sub> 9,5 +APS	MA <sub>1</sub> 9,5 +APS	RA <sub>1</sub> 9,5 +APS	LA <sub>1</sub> 9,5 +APS								
	10		1/8"	A <sub>1</sub> 10 +APS	MA <sub>1</sub> 10 +APS	RA <sub>1</sub> 10 +APS	LA <sub>1</sub> 10 +APS								
	12			A <sub>1</sub> 12 +APS	MA <sub>1</sub> 12 +APS	RA <sub>1</sub> 12 +APS	LA <sub>1</sub> 12 +APS								
2	12,7		1/2"	A <sub>2</sub> 12,7+APS	MA <sub>2</sub> 12,7+APS	RA <sub>2</sub> 12,7+APS	LA <sub>2</sub> 12,7+APS	30	40	26	33	48	3	M6x35	50
	13,5		1/4"	A <sub>2</sub> 13,5+APS	MA <sub>2</sub> 13,5+APS	RA <sub>2</sub> 13,5+APS	LA <sub>2</sub> 13,5+APS								
	14			A <sub>2</sub> 14+APS	MA <sub>2</sub> 14+APS	RA <sub>2</sub> 14+APS	LA <sub>2</sub> 14+APS								
	15			A <sub>2</sub> 15+APS	MA <sub>2</sub> 15+APS	RA <sub>2</sub> 15+APS	LA <sub>2</sub> 15+APS								
	16		5/8"	A <sub>2</sub> 16+APS	MA <sub>2</sub> 16+APS	RA <sub>2</sub> 16+APS	LA <sub>2</sub> 16+APS								
	17,2		3/8"	A <sub>2</sub> 17,2+APS	MA <sub>2</sub> 17,2+APS	RA <sub>2</sub> 17,2+APS	LA <sub>2</sub> 17,2+APS								
	18			A <sub>2</sub> 18+APS	MA <sub>2</sub> 18+APS	RA <sub>2</sub> 18+APS	LA <sub>2</sub> 18+APS								
19		3/4"	A <sub>2</sub> 19+APS	MA <sub>2</sub> 19+APS	RA <sub>2</sub> 19+APS	LA <sub>2</sub> 19+APS									
3	19		3/4"	A <sub>3</sub> 19+APS	MA <sub>3</sub> 19+APS	RA <sub>3</sub> 19+APS	LA <sub>3</sub> 19+APS	30	48	33	35	55	3	M6x40	50
	20			A <sub>3</sub> 20+APS	MA <sub>3</sub> 20+APS	RA <sub>3</sub> 20+APS	LA <sub>3</sub> 20+APS								
	21,3		1/2"	A <sub>3</sub> 21,3+APS	MA <sub>3</sub> 21,3+APS	RA <sub>3</sub> 21,3+APS	LA <sub>3</sub> 21,3+APS								
	22		7/8"	A <sub>3</sub> 22+APS	MA <sub>3</sub> 22+APS	RA <sub>3</sub> 22+APS	LA <sub>3</sub> 22+APS								
	25			A <sub>3</sub> 25+APS	MA <sub>3</sub> 25+APS	RA <sub>3</sub> 25+APS	LA <sub>3</sub> 25+APS								
25,4		1"	A <sub>3</sub> 25,4+APS	MA <sub>3</sub> 25,4+APS	RA <sub>3</sub> 25,4+APS	LA <sub>3</sub> 25,4+APS									
4	26,9		3/4"	A <sub>4</sub> 26,9+APS	MA <sub>4</sub> 26,9+APS	RA <sub>4</sub> 26,9+APS	LA <sub>4</sub> 26,9+APS	30	57	40	42	62	3	M6x45	25
	28			A <sub>4</sub> 28+APS	MA <sub>4</sub> 28+APS	RA <sub>4</sub> 28+APS	LA <sub>4</sub> 28+APS								
	30			A <sub>4</sub> 30+APS	MA <sub>4</sub> 30+APS	RA <sub>4</sub> 30+APS	LA <sub>4</sub> 30+APS								
	32		1 1/4"	A <sub>4</sub> 32+APS	MA <sub>4</sub> 32+APS	RA <sub>4</sub> 32+APS	LA <sub>4</sub> 32+APS								
5	32		1 1/4"	A <sub>5</sub> 32+APS	MA <sub>5</sub> 32+APS	RA <sub>5</sub> 32+APS	LA <sub>5</sub> 32+APS	30	68	52	58	74	3	M6x60	25
	33,7		1"	A <sub>5</sub> 33,7+APS	MA <sub>5</sub> 33,7+APS	RA <sub>5</sub> 33,7+APS	LA <sub>5</sub> 33,7+APS								
	35			A <sub>5</sub> 35+APS	MA <sub>5</sub> 35+APS	RA <sub>5</sub> 35+APS	LA <sub>5</sub> 35+APS								
	38		1 1/2"	A <sub>5</sub> 38+APS	MA <sub>5</sub> 38+APS	RA <sub>5</sub> 38+APS	LA <sub>5</sub> 38+APS								
	40			A <sub>5</sub> 40+APS	MA <sub>5</sub> 40+APS	RA <sub>5</sub> 40+APS	LA <sub>5</sub> 40+APS								
	42			A <sub>5</sub> 42+APS	MA <sub>5</sub> 42+APS	RA <sub>5</sub> 42+APS	LA <sub>5</sub> 42+APS								
	42,4		1 1/4"	A <sub>5</sub> 42,4+APS	MA <sub>5</sub> 42,4+APS	RA <sub>5</sub> 42,4+APS	LA <sub>5</sub> 42,4+APS								
45			A <sub>5</sub> 45+APS	MA <sub>5</sub> 45+APS	RA <sub>5</sub> 45+APS	LA <sub>5</sub> 45+APS									
6	44,5		1 3/4"	A <sub>6</sub> 44,5+APS	MA <sub>6</sub> 44,5+APS	RA <sub>6</sub> 44,5+APS	LA <sub>6</sub> 44,5+APS	30	86	66	66	88	3	M6x70	25
	48,3		1 1/2"	A <sub>6</sub> 48,3+APS	MA <sub>6</sub> 48,3+APS	RA <sub>6</sub> 48,3+APS	LA <sub>6</sub> 48,3+APS								
	50,8		2"	A <sub>6</sub> 50,8+APS	MA <sub>6</sub> 50,8+APS	RA <sub>6</sub> 50,8+APS	LA <sub>6</sub> 50,8+APS								



## Collari doppi in polipropilene, poliammide autoestinguente o gomma

## Double clamps in polypropylene, self-extinguishing polyamide or rubber



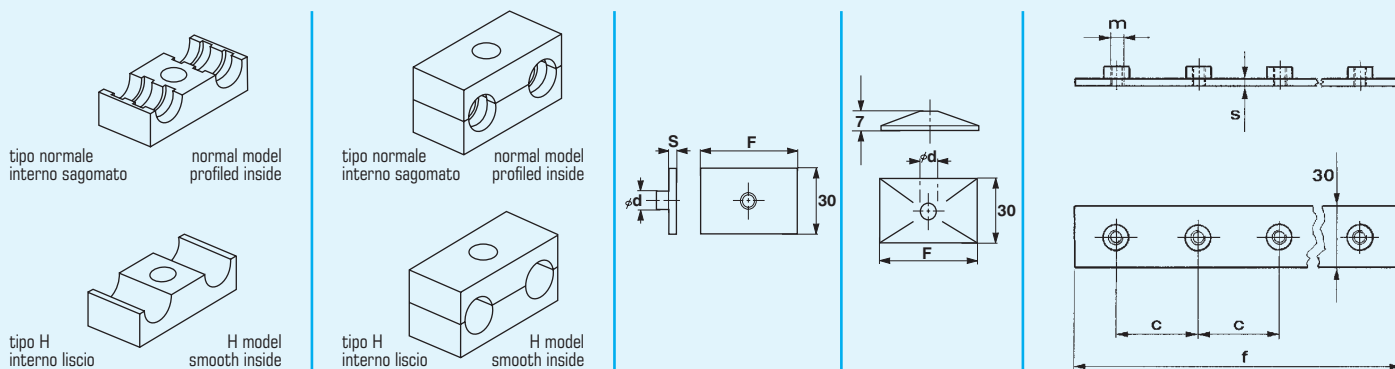
gruppo - group	diametro tubo pipe diameter		tipo di collare clamp type			dimensioni in mm dimension in mm							pezzi per confezione box quantity	
	$\varnothing$ mm	pollici / inches G	$\varnothing$ O.D.	AD polipropilene polypropylene	MD poliammide self-extinguishing	RD gomma rubber	a	b	c	d	f	s		e
1	6-6			AD <sub>1</sub> 06-06	MD <sub>1</sub> 06-06	RD <sub>1</sub> 06-06	30	37	20	25	37	3	MBx35	50
	6,4-6,4		1/4 - 1/4"	AD <sub>1</sub> 6,4-6,4	MD <sub>1</sub> 6,4-6,4	RD <sub>1</sub> 6,4-6,4								
	8-8		5/16 - 5/16"	AD <sub>1</sub> 08-08	MD <sub>1</sub> 08-08	RD <sub>1</sub> 08-08								
	9,5-9,5		3/8 - 3/8"	AD <sub>1</sub> 9,5-9,5	MD <sub>1</sub> 9,5-9,5	RD <sub>1</sub> 9,5-9,5								
	10-10		1/8 - 1/8"	AD <sub>1</sub> 10-10	MD <sub>1</sub> 10-10	RD <sub>1</sub> 10-10								
	12-12			AD <sub>1</sub> 12-12	MD <sub>1</sub> 12-12	RD <sub>1</sub> 12-12								
2	12,7		1/2 - 1/2"	AD <sub>2</sub> 12,7-12,7	MD <sub>2</sub> 12,7-12,7	RD <sub>2</sub> 12,7-12,7	30	53	29	26	55	5	MBx35	50
	13,5		1/4 - 1/4"	AD <sub>2</sub> 1/4 - 1/4"	MD <sub>2</sub> 1/4 - 1/4"	RD <sub>2</sub> 1/4 - 1/4"								
	14-14			AD <sub>2</sub> 14-14	MD <sub>2</sub> 14-14	RD <sub>2</sub> 14-14								
	15-15			AD <sub>2</sub> 15-15	MD <sub>2</sub> 15-15	RD <sub>2</sub> 15-15								
	16-16		5/8 - 5/8"	AD <sub>2</sub> 16-16	MD <sub>2</sub> 16-16	RD <sub>2</sub> 16-16								
	17,2-17,2		3/8 - 3/8"	AD <sub>2</sub> 3/8 - 3/8"	MD <sub>2</sub> 3/8 - 3/8"	RD <sub>2</sub> 3/8 - 3/8"								
18-18			AD <sub>2</sub> 18-18	MD <sub>2</sub> 18-18	RD <sub>2</sub> 18-18									
3	19-19		3/4 - 3/4"	AD <sub>3</sub> 19-19	MD <sub>3</sub> 19-19	RD <sub>3</sub> 19-19	30	67	36	37	70	5	MBx45	50
	20-20			AD <sub>3</sub> 20-20	MD <sub>3</sub> 20-20	RD <sub>3</sub> 20-20								
	21,3-21,3		1/2 - 1/2"	AD <sub>3</sub> 1/2 - 1/2"	MD <sub>3</sub> 1/2 - 1/2"	RD <sub>3</sub> 1/2 - 1/2"								
	22-22		7/8 - 7/8"	AD <sub>3</sub> 22-22	MD <sub>3</sub> 22-22	RD <sub>3</sub> 22-22								
	25-25			AD <sub>3</sub> 25-25	MD <sub>3</sub> 25-25	RD <sub>3</sub> 25-25								
25,4-25,4		1 - 1"	AD <sub>3</sub> 25,4-25,4	MD <sub>3</sub> 25,4-25,4	RD <sub>3</sub> 25,4-25,4									
4	26,9		3/4 - 3/4"	AD <sub>4</sub> 3/4 - 3/4"	MD <sub>4</sub> 3/4 - 3/4"	RD <sub>4</sub> 3/4 - 3/4"	30	82	45	42	85	5	MBx50	50
	28-28			AD <sub>4</sub> 28-28	MD <sub>4</sub> 28-28	RD <sub>4</sub> 28-28								
	30-30			AD <sub>4</sub> 30-30	MD <sub>4</sub> 30-30	RD <sub>4</sub> 30-30								
5	32-32		1 1/4 - 1 1/4"	AD <sub>5</sub> 32-32	MD <sub>5</sub> 32-32	RD <sub>5</sub> 32-32	30	106	56	54	110	5	MBx60	25
	33,7-33,7		1 - 1"	AD <sub>5</sub> 1 - 1"	MD <sub>5</sub> 1 - 1"	RD <sub>5</sub> 1 - 1"								
	35-35			AD <sub>5</sub> 35-35	MD <sub>5</sub> 35-35	RD <sub>5</sub> 35-35								
	38-38		1 1/2 - 1 1/2"	AD <sub>5</sub> 38-38	MD <sub>5</sub> 38-38	RD <sub>5</sub> 38-38								
	40-40			AD <sub>5</sub> 40-40	MD <sub>5</sub> 40-40	RD <sub>5</sub> 40-40								
	42-42			AD <sub>5</sub> 42-42	MD <sub>5</sub> 42-42	RD <sub>5</sub> 42-42								
42,4-42,4		1 1/4 - 1 1/4"	AD <sub>5</sub> 1 1/4 - 1 1/4"	MD <sub>5</sub> 1 1/4 - 1 1/4"	RD <sub>5</sub> 1 1/4 - 1 1/4"									

AD\*... = polipropilene / polypropylene

MD... = polyamide / self-extinguishing

RD... = gomma / rubber

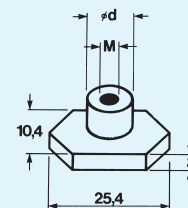
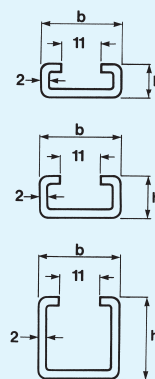
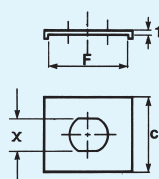
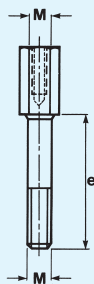
...H = interno liscio / smooth inside (per ordine di collari tipo H, aggiungere H dopo il codice / to order clamps type H, please put the H at the end of the code)



semi-collare clamp-half	coppia collari clamp body (2 halves)	piastra inferiore lower plate			piastra superiore upper plate		piastra inferiore multipla multiple lower plate				
		ADPIN			ADPS		ADPIM				
AD ... S	AD ... C	F mm	Ø d mm	S	F mm	Ø d mm	f mm	c mm	s mm	m	n° collari clamps
AD <sub>1</sub> 06-06 S	AD <sub>1</sub> 06-06 C	ADPIN <sub>1</sub>			ADPS <sub>1</sub>		ADPIM <sub>1</sub>				
AD <sub>1</sub> 6,4-6,4 S	AD <sub>1</sub> 6,4-6,4 C	30	12	3	35	7	200	40	3	M6	5
AD <sub>1</sub> 08-08 S	AD <sub>1</sub> 08-08 C										
AD <sub>1</sub> 9,5-9,5 S	AD <sub>1</sub> 9,5-9,5 C										
AD <sub>1</sub> 10-10 S	AD <sub>1</sub> 10-10 C										
AD <sub>1</sub> 12-12 S	AD <sub>1</sub> 12-12 C										
AD <sub>2</sub> 12,7-12,7 S	AD <sub>2</sub> 12,7-12,7 C										
AD <sub>2</sub> 1/4 - 1/4" S	AD <sub>2</sub> 1/4 - 1/4" C	55	14	5	52	9	290	58	5	M8	5
AD <sub>2</sub> 14-14 S	AD <sub>2</sub> 14-14 C										
AD <sub>2</sub> 15-15 S	AD <sub>2</sub> 15-15 C										
AD <sub>2</sub> 16-16 S	AD <sub>2</sub> 16-16 C										
AD <sub>2</sub> 3/8 - 3/8" S	AD <sub>2</sub> 3/8 - 3/8" C										
AD <sub>2</sub> 18-18 S	AD <sub>2</sub> 18-18 C										
AD <sub>3</sub> 19-19 S	AD <sub>3</sub> 19-19 C	ADPIN <sub>3</sub>			ADPS <sub>3</sub>		ADPIM <sub>3</sub>				
AD <sub>3</sub> 20-20 S	AD <sub>3</sub> 20-20 C	70	14	5	66	9	360	72	5	M8	5
AD <sub>3</sub> 1/2 - 1/2" S	AD <sub>3</sub> 1/2 - 1/2" C										
AD <sub>3</sub> 22-22 S	AD <sub>3</sub> 22-22 C										
AD <sub>3</sub> 25-25 S	AD <sub>3</sub> 25-25 C										
AD <sub>3</sub> 25,4-25,4 S	AD <sub>3</sub> 25,4-25,4 C										
AD <sub>4</sub> 3/4 - 3/4" S	AD <sub>4</sub> 3/4 - 3/4" C										
AD <sub>4</sub> 28-28 S	AD <sub>4</sub> 28-28 C	85	14	5	81	9	450	90	5	M8	5
AD <sub>4</sub> 30-30 S	AD <sub>4</sub> 30-30 C										
AD <sub>5</sub> 32-32 S	AD <sub>5</sub> 32-32 C										
AD <sub>5</sub> 1 - 1" S	AD <sub>5</sub> 1 - 1" C	110	14	5	105	9	560	112	5	M8	5
AD <sub>5</sub> 35-35 S	AD <sub>5</sub> 35-35 C										
AD <sub>5</sub> 38-38 S	AD <sub>5</sub> 38-38 C										
AD <sub>5</sub> 40-40 S	AD <sub>5</sub> 40-40 C										
AD <sub>5</sub> 42-42 S	AD <sub>5</sub> 42-42 C										
AD <sub>5</sub> 1 1/4 - 1 1/4" S	AD <sub>5</sub> 1 1/4 - 1 1/4" C										

\* La produzione standard è di colore verde, colore nero su richiesta.  
Standard production in green, black color on request.

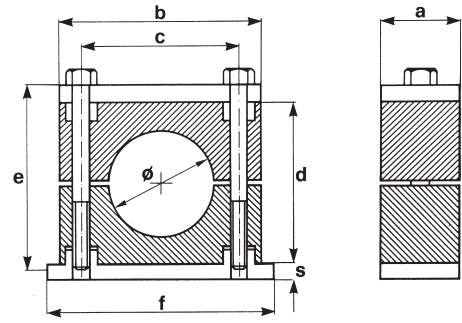




vite a testa esagonale high hexagonal head screw		vite a testa esagonale allungata high hexagonal head screw		piastra superiore di sicurezza security upper plate			binari portanti spessore 2 mm rail		dado esagonale fissaggio binari hexagonal nut				
<b>ADVTE</b>		<b>ADVTEA</b>		<b>APMRSD</b>			<b>ABINS</b>		<b>ADES</b>				
M	e mm	M	e mm	F mm	c mm	X mm	b mm	h mm	M	Ø d mm			
<b>ADVTE<sub>1</sub></b>		<b>ADVTEA<sub>1</sub></b>		<b>APMRSD<sub>1</sub></b>			<b>ABINS-1</b>		<b>ADES</b>				
M6	35	M6	20	30	30	11			28	11	M6	12	
<b>ADVTE<sub>2</sub></b>		<b>ADVTEA<sub>2</sub></b>		<b>APMRSD<sub>2-5</sub></b>						<b>ABINS-2</b>		<b>ADES<sub>D</sub></b>	
M8	35	M8	20	30	30	13				28	14		
<b>ADVTE<sub>3</sub></b>		<b>ADVTEA<sub>3</sub></b>		<b>APMRSD<sub>2-5</sub></b>						<b>ABINS-3</b>			
M8	45	M8	29	30	30	13	28	30					
<b>ADVTE<sub>4</sub></b>		<b>ADVTEA<sub>4</sub></b>		<b>APMRSD<sub>2-5</sub></b>			<b>ABINS-3</b>						
M8	50	M8	34	30	30	13	28	30					
<b>ADVTE<sub>5</sub></b>		<b>ADVTEA<sub>5</sub></b>		<b>APMRSD<sub>2-5</sub></b>									
M8	60	M8	47	30	30	13							

**Collari serie pesante  
in polipropilene,  
poliammide autoestinguente,  
alluminio o gomma**

**Heavy duty clamps  
in polypropylene,  
self-extinguishing polyamide,  
aluminium or rubber**



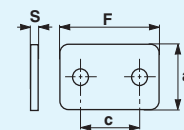
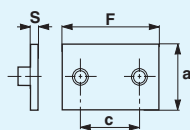
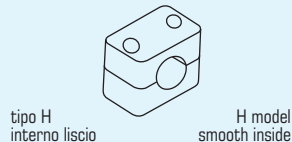
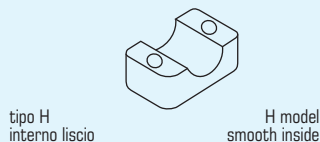
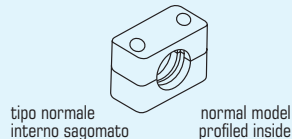
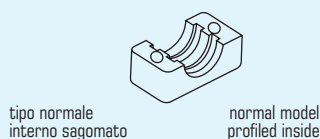
gruppo - group	diametro tubo pipe diameter			tipo di collare clamp type				dimensioni in mm dimension in mm						
	Ø mm	pollici / inches G	Ø O.D.	AMP.P polipropilene polypropylene	MMP.P poliammide self-extinguishing	RMP.P gomma rubber	AMLL.P alluminio aluminium	a	b	c	d	f	s	e
1	6			AMP.P <sub>1</sub> 06	MMP.P <sub>1</sub> 06	RMP.P <sub>1</sub> 06	AMLL.P <sub>1</sub> 06	30	55	33	32	73	8	M10x45
	6,4		1/4"	AMP.P <sub>1</sub> 6,4	MMP.P <sub>1</sub> 6,4	RMP.P <sub>1</sub> 6,4	AMLL.P <sub>1</sub> 6,4							
	8		5/16"	AMP.P <sub>1</sub> 08	MMP.P <sub>1</sub> 08	RMP.P <sub>1</sub> 08	AMLL.P <sub>1</sub> 08							
	9,5		3/8"	AMP.P <sub>1</sub> 9,5	MMP.P <sub>1</sub> 9,5	RMP.P <sub>1</sub> 9,5	AMLL.P <sub>1</sub> 9,5							
	10	1/8"		AMP.P <sub>1</sub> 10	MMP.P <sub>1</sub> 10	RMP.P <sub>1</sub> 10	AMLL.P <sub>1</sub> 10							
	12			AMP.P <sub>1</sub> 12	MMP.P <sub>1</sub> 12	RMP.P <sub>1</sub> 12	AMLL.P <sub>1</sub> 12							
	12,7		1/2"	AMP.P <sub>1</sub> 12,7	MMP.P <sub>1</sub> 12,7	RMP.P <sub>1</sub> 12,7	AMLL.P <sub>1</sub> 12,7							
	13,5	1/4"		AMP.P <sub>1</sub> 1/4"	MMP.P <sub>1</sub> 1/4"	RMP.P <sub>1</sub> 1/4"	AMLL.P <sub>1</sub> 1/4"							
	14			AMP.P <sub>1</sub> 14	MMP.P <sub>1</sub> 14	RMP.P <sub>1</sub> 14	AMLL.P <sub>1</sub> 14							
	15			AMP.P <sub>1</sub> 15	MMP.P <sub>1</sub> 15	RMP.P <sub>1</sub> 15	AMLL.P <sub>1</sub> 15							
2	16		5/8"	AMP.P <sub>1</sub> 16	MMP.P <sub>1</sub> 16	RMP.P <sub>1</sub> 16	AMLL.P <sub>1</sub> 16	30	70	45	48	85	8	M10x60
	17,2	3/8"		AMP.P <sub>1</sub> 3/8"	MMP.P <sub>1</sub> 3/8"	RMP.P <sub>1</sub> 3/8"	AMLL.P <sub>1</sub> 3/8"							
	18			AMP.P <sub>1</sub> 18	MMP.P <sub>1</sub> 18	RMP.P <sub>1</sub> 18	AMLL.P <sub>1</sub> 18							
	19		3/4"	AMP.P <sub>2</sub> 19	MMP.P <sub>2</sub> 19	RMP.P <sub>2</sub> 19	AMLL.P <sub>2</sub> 19							
	20			AMP.P <sub>2</sub> 20	MMP.P <sub>2</sub> 20	RMP.P <sub>2</sub> 20	AMLL.P <sub>2</sub> 20							
	21,3	1/2"		AMP.P <sub>2</sub> 1/2"	MMP.P <sub>2</sub> 1/2"	RMP.P <sub>2</sub> 1/2"	AMLL.P <sub>2</sub> 1/2"							
	22		7/8"	AMP.P <sub>2</sub> 22	MMP.P <sub>2</sub> 22	RMP.P <sub>2</sub> 22	AMLL.P <sub>2</sub> 22							
	25			AMP.P <sub>2</sub> 25	MMP.P <sub>2</sub> 25	RMP.P <sub>2</sub> 25	AMLL.P <sub>2</sub> 25							
	25,4		1"	AMP.P <sub>2</sub> 25,4	MMP.P <sub>2</sub> 25,4	RMP.P <sub>2</sub> 25,4	AMLL.P <sub>2</sub> 25,4							
	26,9	3/4"		AMP.P <sub>2</sub> 3/4"	MMP.P <sub>2</sub> 3/4"	RMP.P <sub>2</sub> 3/4"	AMLL.P <sub>2</sub> 3/4"							
3	28			AMP.P <sub>2</sub> 28	MMP.P <sub>2</sub> 28	RMP.P <sub>2</sub> 28	AMLL.P <sub>2</sub> 28	30	85	60	60	102	8	M10x70
	30			AMP.P <sub>2</sub> 30	MMP.P <sub>2</sub> 30	RMP.P <sub>2</sub> 30	AMLL.P <sub>2</sub> 30							
	30			AMP.P <sub>3</sub> 30	MMP.P <sub>3</sub> 30	RMP.P <sub>3</sub> 30	AMLL.P <sub>3</sub> 30							
	32		1 1/4"	AMP.P <sub>3</sub> 32	MMP.P <sub>3</sub> 32	RMP.P <sub>3</sub> 32	AMLL.P <sub>3</sub> 32							
	33,7	1"		AMP.P <sub>3</sub> 1"	MMP.P <sub>3</sub> 1"	RMP.P <sub>3</sub> 1"	AMLL.P <sub>3</sub> 1"							
	35			AMP.P <sub>3</sub> 35	MMP.P <sub>3</sub> 35	RMP.P <sub>3</sub> 35	AMLL.P <sub>3</sub> 35							
	38		1 1/2"	AMP.P <sub>3</sub> 38	MMP.P <sub>3</sub> 38	RMP.P <sub>3</sub> 38	AMLL.P <sub>3</sub> 38							
	40			AMP.P <sub>3</sub> 40	MMP.P <sub>3</sub> 40	RMP.P <sub>3</sub> 40	AMLL.P <sub>3</sub> 40							
42			AMP.P <sub>3</sub> 42	MMP.P <sub>3</sub> 42	RMP.P <sub>3</sub> 42	AMLL.P <sub>3</sub> 42								
42,4	1 1/4"		AMP.P <sub>3</sub> 1 1/4"	MMP.P <sub>3</sub> 1 1/4"	RMP.P <sub>3</sub> 1 1/4"	AMLL.P <sub>3</sub> 1 1/4"								
4	38		1 1/2"	AMP.P <sub>4</sub> 38	MMP.P <sub>4</sub> 38	RMP.P <sub>4</sub> 38	AMLL.P <sub>4</sub> 38	45	120	90	90	140	10	M12x100
	42			AMP.P <sub>4</sub> 42	MMP.P <sub>4</sub> 42	RMP.P <sub>4</sub> 42	AMLL.P <sub>4</sub> 42							
	42,4	1 1/4"		AMP.P <sub>4</sub> 1 1/4"	MMP.P <sub>4</sub> 1 1/4"	RMP.P <sub>4</sub> 1 1/4"	AMLL.P <sub>4</sub> 1 1/4"							
	44,5		1 3/4"	AMP.P <sub>4</sub> 44,5	MMP.P <sub>4</sub> 44,5	RMP.P <sub>4</sub> 44,5	AMLL.P <sub>4</sub> 44,5							
	48,3	1 1/2"		AMP.P <sub>4</sub> 1 1/2"	MMP.P <sub>4</sub> 1 1/2"	RMP.P <sub>4</sub> 1 1/2"	AMLL.P <sub>4</sub> 1 1/2"							
	50			AMP.P <sub>4</sub> 50	MMP.P <sub>4</sub> 50	RMP.P <sub>4</sub> 50	AMLL.P <sub>4</sub> 50							
	50,8		2"	AMP.P <sub>4</sub> 50,8	MMP.P <sub>4</sub> 50,8	RMP.P <sub>4</sub> 50,8	AMLL.P <sub>4</sub> 50,8							
	55			AMP.P <sub>4</sub> 55	MMP.P <sub>4</sub> 55	RMP.P <sub>4</sub> 55	AMLL.P <sub>4</sub> 55							
	57		2 1/4"	AMP.P <sub>4</sub> 57	MMP.P <sub>4</sub> 57	RMP.P <sub>4</sub> 57	AMLL.P <sub>4</sub> 57							
	60,3	2"		AMP.P <sub>4</sub> 2"	MMP.P <sub>4</sub> 2"	RMP.P <sub>4</sub> 2"	AMLL.P <sub>4</sub> 2"							
	63,5		2 1/2"	AMP.P <sub>4</sub> 63,5	MMP.P <sub>4</sub> 63,5	RMP.P <sub>4</sub> 63,5	AMLL.P <sub>4</sub> 63,5							
	65			AMP.P <sub>4</sub> 65	MMP.P <sub>4</sub> 65	RMP.P <sub>4</sub> 65	AMLL.P <sub>4</sub> 65							
70		2 3/4"	AMP.P <sub>4</sub> 70	MMP.P <sub>4</sub> 70	RMP.P <sub>4</sub> 70	AMLL.P <sub>4</sub> 70								

AMP.P\*... = polipropilene / polypropylene  
 ...H = interno liscio / smooth inside (per ordine di collari tipo H, aggiungere H dopo il codice / to order clamps type H, please put the H at the end of the code)

MMP.P... = polyamide / self-extinguishing

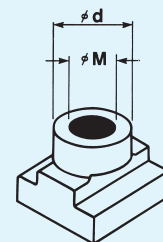
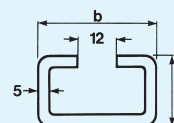
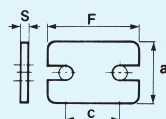
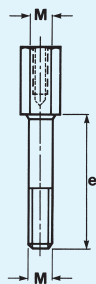
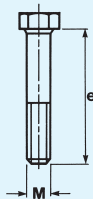
RMP.P... = gomma / rubber

AMLL.P... = alluminio / aluminium



semi-collare clamp-half	coppia collari clamp body (2 halves)	piastra inferiore lower plate				piastra superiore upper plate			
		APINP				APSP			
AMP.P ... S	AMP.P ... C	a mm	F mm	c mm	S mm	a mm	F mm	c mm	S mm
AMP.P <sub>1</sub> 06 S	AMP.P <sub>1</sub> 06 C	<b>APINP<sub>1</sub></b>				<b>APSP<sub>1</sub></b>			
AMP.P <sub>1</sub> 6,4 S	AMP.P <sub>1</sub> 6,4 C	30	75	33	8	30	55	33	8
AMP.P <sub>1</sub> 08 S	AMP.P <sub>1</sub> 08 C								
AMP.P <sub>1</sub> 9,5 S	AMP.P <sub>1</sub> 9,5 C								
AMP.P <sub>1</sub> 10 S	AMP.P <sub>1</sub> 10 C								
AMP.P <sub>1</sub> 12 S	AMP.P <sub>1</sub> 12 C								
AMP.P <sub>1</sub> 12,7 S	AMP.P <sub>1</sub> 12,7 C								
AMP.P <sub>1</sub> 1/4" S	AMP.P <sub>1</sub> 1/4" C								
AMP.P <sub>1</sub> 14 S	AMP.P <sub>1</sub> 14 C								
AMP.P <sub>1</sub> 15 S	AMP.P <sub>1</sub> 15 C								
AMP.P <sub>1</sub> 16 S	AMP.P <sub>1</sub> 16 C								
AMP.P <sub>1</sub> 3/8" S	AMP.P <sub>1</sub> 3/8" C								
AMP.P <sub>1</sub> 18 S	AMP.P <sub>1</sub> 18 C								
AMP.P <sub>2</sub> 19 S	AMP.P <sub>2</sub> 19 C	<b>APINP<sub>2</sub></b>				<b>APSP<sub>2</sub></b>			
AMP.P <sub>2</sub> 20 S	AMP.P <sub>2</sub> 20 C	30	87	45	8	30	70	45	8
AMP.P <sub>2</sub> 1/2" S	AMP.P <sub>2</sub> 1/2" C								
AMP.P <sub>2</sub> 22 S	AMP.P <sub>2</sub> 22 C								
AMP.P <sub>2</sub> 25 S	AMP.P <sub>2</sub> 25 C								
AMP.P <sub>2</sub> 25,4 S	AMP.P <sub>2</sub> 25,4 C								
AMP.P <sub>2</sub> 3/4" S	AMP.P <sub>2</sub> 3/4" C								
AMP.P <sub>2</sub> 28 S	AMP.P <sub>2</sub> 28 C								
AMP.P <sub>2</sub> 30 S	AMP.P <sub>2</sub> 30 C								
AMP.P <sub>3</sub> 30 S	AMP.P <sub>3</sub> 30 C	<b>APINP<sub>3</sub></b>				<b>APSP<sub>3</sub></b>			
AMP.P <sub>3</sub> 32 S	AMP.P <sub>3</sub> 32 C	30	102	60	8	30	85	60	8
AMP.P <sub>3</sub> 1" S	AMP.P <sub>3</sub> 1" C								
AMP.P <sub>3</sub> 35 S	AMP.P <sub>3</sub> 35 C								
AMP.P <sub>3</sub> 38 S	AMP.P <sub>3</sub> 38 C								
AMP.P <sub>3</sub> 40 S	AMP.P <sub>3</sub> 40 C								
AMP.P <sub>3</sub> 42 S	AMP.P <sub>3</sub> 42 C								
AMP.P <sub>3</sub> 1 1/4" S	AMP.P <sub>3</sub> 1 1/4" C								
AMP.P <sub>4</sub> 38 S	AMP.P <sub>4</sub> 38 C	<b>APINP<sub>4</sub></b>				<b>APSP<sub>4</sub></b>			
AMP.P <sub>4</sub> 42 S	AMP.P <sub>4</sub> 42 C	45	140	90	10	45	120	90	10
AMP.P <sub>4</sub> 1 1/4" S	AMP.P <sub>4</sub> 1 1/4" C								
AMP.P <sub>4</sub> 44,5 S	AMP.P <sub>4</sub> 44,5 C								
AMP.P <sub>4</sub> 1 1/2" S	AMP.P <sub>4</sub> 1 1/2" C								
AMP.P <sub>4</sub> 50 S	AMP.P <sub>4</sub> 50 C								
AMP.P <sub>4</sub> 50,8 S	AMP.P <sub>4</sub> 50,8 C								
AMP.P <sub>4</sub> 55 S	AMP.P <sub>4</sub> 55 C								
AMP.P <sub>4</sub> 57 S	AMP.P <sub>4</sub> 57 C								
AMP.P <sub>4</sub> 2" S	AMP.P <sub>4</sub> 2" C								
AMP.P <sub>4</sub> 63,5 S	AMP.P <sub>4</sub> 63,5 C								
AMP.P <sub>4</sub> 65 S	AMP.P <sub>4</sub> 65 C								
AMP.P <sub>4</sub> 70 S	AMP.P <sub>4</sub> 70 C								

\* La produzione standard è di colore verde, colore nero su richiesta.  
 Standard production in green, black color on request.

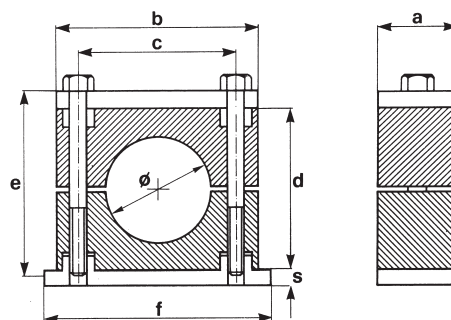


vite a testa esagonale hexagonal head screw	vite a testa esagonale allungata high hexagonal head screw	piastra superiore di sicurezza security upper plate	binari portanti spessore 5 mm rail	dado fissaggio binari rail nut
<b>AVTEP</b>	<b>AVTEAP</b>	<b>APMRSP</b>	<b>ABINP</b>	<b>ADESP</b>
M   e mm	M   e mm	a   F   c   S mm	b   h mm	M   Ø d mm
<b>AVTEP<sub>1</sub></b>	<b>AVTEAP<sub>1</sub></b>	<b>APMRSP<sub>1</sub></b>	<b>ABINP-1</b>	<b>ADESP-1</b>
M10   45	M10   26	30   55   33   8		
<b>AVTEP<sub>2</sub></b>	<b>AVTEAP<sub>2</sub></b>	<b>APMRSP<sub>2</sub></b>		
M10   60	M10   41	30   70   45   8		
<b>AVTEP<sub>3</sub></b>	<b>AVTEAP<sub>3</sub></b>	<b>APMRSP<sub>3</sub></b>	<b>ADESP-2</b>	
M10   70	M10   52	30   85   60   8		
<b>AVTEP<sub>4</sub></b>	<b>AVTEAP<sub>4</sub></b>	<b>APMRSP<sub>4</sub></b>		
M12   100	M12   83	45   120   90   10		M12   20

\* Altre piastre speciali sono a pag. 19  
Other special plate are at page 19

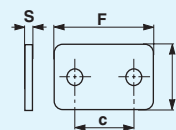
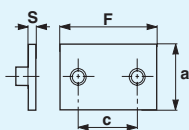
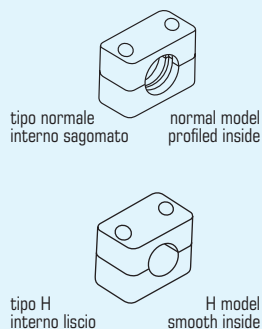
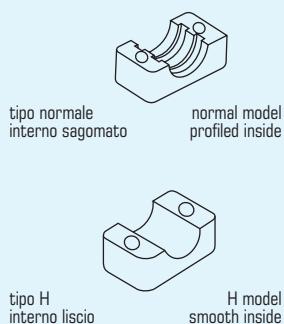
**Collari serie pesante  
in polipropilene,  
poliammide autoestinguente,  
alluminio o gomma**

**Heavy duty clamps  
in polypropylene,  
self-extinguishing polyamide,  
aluminium or rubber**



gruppo - group	diametro tubo pipe diameter			tipo di collare clamp type				dimensioni in mm dimension in mm						
	Ø mm	pollici/inches G	Ø O.D.	AMP.P polipropilene polypropylene	MMP.P polyamide self-extinguishing	RMP.P gomma rubber	AMLL.P alluminio aluminium	a	b	c	d	f	s	e
5	65			AMP.P <sub>5</sub> 65	MMP.P <sub>5</sub> 65	RMP.P <sub>5</sub> 65	AMLL.P <sub>5</sub> 65	60	152	122	120	180	10	M16x130
	70		2 <sup>3</sup> / <sub>4</sub> "	AMP.P <sub>5</sub> 70	MMP.P <sub>5</sub> 70	RMP.P <sub>5</sub> 70	AMLL.P <sub>5</sub> 70							
	75			AMP.P <sub>5</sub> 75	MMP.P <sub>5</sub> 75	RMP.P <sub>5</sub> 75	AMLL.P <sub>5</sub> 75							
	76,1	2 <sup>1</sup> / <sub>2</sub> "	3"	AMP.P <sub>5</sub> 2 <sup>1</sup> / <sub>2</sub> "	MMP.P <sub>5</sub> 2 <sup>1</sup> / <sub>2</sub> "	RMP.P <sub>5</sub> 2 <sup>1</sup> / <sub>2</sub> "	AMLL.P <sub>5</sub> 2 <sup>1</sup> / <sub>2</sub> "							
	80			AMP.P <sub>5</sub> 80	MMP.P <sub>5</sub> 80	RMP.P <sub>5</sub> 80	AMLL.P <sub>5</sub> 80							
	82,5		3 <sup>1</sup> / <sub>4</sub> "	AMP.P <sub>5</sub> 82,5	MMP.P <sub>5</sub> 82,5	RMP.P <sub>5</sub> 82,5	AMLL.P <sub>5</sub> 82,5							
	88,9	3"	3 <sup>1</sup> / <sub>2</sub> "	AMP.P <sub>5</sub> 3"	MMP.P <sub>5</sub> 3"	RMP.P <sub>5</sub> 3"	AMLL.P <sub>5</sub> 3"							
6	88,9	3"	3 <sup>1</sup> / <sub>2</sub> "	AMP.P <sub>6</sub> 3"	MMP.P <sub>6</sub> 3"	RMP.P <sub>6</sub> 3"	—	80	205	168	170	225	15	M20x190
	100			AMP.P <sub>6</sub> 100	MMP.P <sub>6</sub> 100	RMP.P <sub>6</sub> 100	—							
	101,6	3 <sup>1</sup> / <sub>2</sub> "	4"	AMP.P <sub>6</sub> 3 <sup>1</sup> / <sub>2</sub> "	MMP.P <sub>6</sub> 3 <sup>1</sup> / <sub>2</sub> "	RMP.P <sub>6</sub> 3 <sup>1</sup> / <sub>2</sub> "	—							
	108		4 <sup>1</sup> / <sub>4</sub> "	AMP.P <sub>6</sub> 108	MMP.P <sub>6</sub> 108	RMP.P <sub>6</sub> 108	—							
	114,3	4"	4 <sup>1</sup> / <sub>2</sub> "	AMP.P <sub>6</sub> 4"	MMP.P <sub>6</sub> 4"	RMP.P <sub>6</sub> 4"	—							
	127	4 <sup>1</sup> / <sub>2</sub> "	5"	AMP.P <sub>6</sub> 4 <sup>1</sup> / <sub>2</sub> "	MMP.P <sub>6</sub> 4 <sup>1</sup> / <sub>2</sub> "	RMP.P <sub>6</sub> 4 <sup>1</sup> / <sub>2</sub> "	—							
	133		5 <sup>1</sup> / <sub>2</sub> "	AMP.P <sub>6</sub> 133	MMP.P <sub>6</sub> 133	RMP.P <sub>6</sub> 133	—							
7	133		5 <sup>1</sup> / <sub>4</sub> "	AMP.P <sub>7</sub> 133	MMP.P <sub>7</sub> 133	RMP.P <sub>7</sub> 133	—	90	250	205	200	270	15	M24x220
	139,7	5"	5 <sup>1</sup> / <sub>2</sub> "	AMP.P <sub>7</sub> 5"	MMP.P <sub>7</sub> 5"	RMP.P <sub>7</sub> 5"	—							
	152,4	5 <sup>1</sup> / <sub>2</sub> "	6"	AMP.P <sub>7</sub> 5 <sup>1</sup> / <sub>2</sub> "	MMP.P <sub>7</sub> 5 <sup>1</sup> / <sub>2</sub> "	RMP.P <sub>7</sub> 5 <sup>1</sup> / <sub>2</sub> "	—							
	165		6 <sup>1</sup> / <sub>2</sub> "	AMP.P <sub>7</sub> 165	MMP.P <sub>7</sub> 165	RMP.P <sub>7</sub> 165	—							
	168,3	6"		AMP.P <sub>7</sub> 6"	MMP.P <sub>7</sub> 6"	RMP.P <sub>7</sub> 6"	—							
8	168,3	6"		AMP.P <sub>8</sub> 6"	—	—	—	120	320	265	270	340	25	M30x300
	177,8		7"	AMP.P <sub>8</sub> 177,8	—	—	—							
	193,7		7 <sup>5</sup> / <sub>8</sub> "	AMP.P <sub>8</sub> 193,7	—	—	—							
	216		8 <sup>1</sup> / <sub>2</sub> "	AMP.P <sub>8</sub> 216	—	—	—							
	219,1	8"		AMP.P <sub>8</sub> 8"	—	—	—							

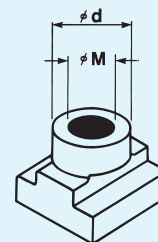
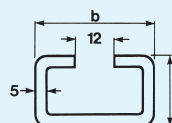
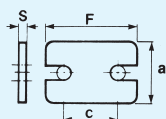
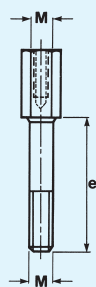
AMP.P\*... = polipropilene / polypropylene    MMP.P... = polyamide / self-extinguishing    RMP.P... = gomma / rubber    AMLL.P... = alluminio / aluminium  
 ...H = interno liscio / smooth inside (per ordine di collari tipo H, aggiungere H dopo il codice / to order clamps type H, please put the H at the end of the code)



semi-collare clamp-half	coppia collari clamp body (2 halves)	piastra inferiore lower plate				piastra superiore upper plate				vite a testa esagonale hexagonal head screw	
		<b>APINP</b>				<b>APSP</b>				<b>AVTEP</b>	
<b>AMP.P ... S</b>	<b>AMP.P ... C</b>	a mm	F mm	c mm	S mm	a mm	F mm	c mm	S mm	M	e mm
		<b>APINP<sub>5</sub></b>				<b>APSP<sub>5</sub></b>				<b>AVTEP<sub>5</sub></b>	
AMP.P <sub>5</sub> 65 S	AMP.P <sub>5</sub> 65 C	60	180	122	10	60	152	122	10	M16	130
AMP.P <sub>5</sub> 70 S	AMP.P <sub>5</sub> 70 C										
AMP.P <sub>5</sub> 75 S	AMP.P <sub>5</sub> 75 C										
AMP.P <sub>5</sub> 2 1/2" S	AMP.P <sub>5</sub> 2 1/2" C										
AMP.P <sub>5</sub> 80 S	AMP.P <sub>5</sub> 80 C										
AMP.P <sub>5</sub> 82,5 S	AMP.P <sub>5</sub> 82,5 C										
AMP.P <sub>5</sub> 3" S	AMP.P <sub>5</sub> 3" C										
		<b>APINP<sub>6</sub></b>				<b>APSP<sub>6</sub></b>				<b>AVTEP<sub>6</sub></b>	
AMP.P <sub>6</sub> 3" S	AMP.P <sub>6</sub> 3" C	80	225	168	15	80	205	168	15	M20	190
AMP.P <sub>6</sub> 100 S	AMP.P <sub>6</sub> 100 C										
AMP.P <sub>6</sub> 3 1/2" S	AMP.P <sub>6</sub> 3 1/2" C										
AMP.P <sub>6</sub> 108 S	AMP.P <sub>6</sub> 108 C										
AMP.P <sub>6</sub> 4" S	AMP.P <sub>6</sub> 4" C										
AMP.P <sub>6</sub> 4 1/2" S	AMP.P <sub>6</sub> 4 1/2" C										
AMP.P <sub>6</sub> 133 S	AMP.P <sub>6</sub> 133 C										
		<b>APINP<sub>7</sub></b>				<b>APSP<sub>7</sub></b>				<b>AVTEP<sub>7</sub></b>	
AMP.P <sub>7</sub> 133 S	AMP.P <sub>7</sub> 133 C	90	270	205	15	90	250	205	15	M24	220
AMP.P <sub>7</sub> 5" S	AMP.P <sub>7</sub> 5" C										
AMP.P <sub>7</sub> 5 1/2" S	AMP.P <sub>7</sub> 5 1/2" C										
AMP.P <sub>7</sub> 165 S	AMP.P <sub>7</sub> 165 C										
AMP.P <sub>7</sub> 6" S	AMP.P <sub>7</sub> 6" C										
		<b>APINP<sub>8</sub></b>				<b>APSP<sub>8</sub></b>				<b>AVTEP<sub>8</sub></b>	
AMP.P <sub>8</sub> 6" S	AMP.P <sub>8</sub> 6" C	120	340	265	25	120	320	265	25	M30	300
AMP.P <sub>8</sub> 177,8 S	AMP.P <sub>8</sub> 177,8 C										
AMP.P <sub>8</sub> 193,7 S	AMP.P <sub>8</sub> 193,7 C										
AMP.P <sub>8</sub> 216 S	AMP.P <sub>8</sub> 216 C										
AMP.P <sub>8</sub> 8" S	AMP.P <sub>8</sub> 8" C										

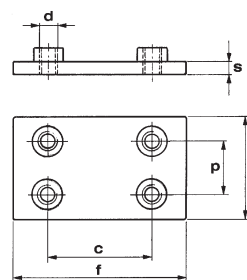
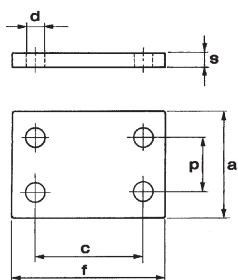
\* La produzione standard è di colore verde, colore nero su richiesta.  
 Standard production in green, black color on request.





vite a testa esagonale allungata high hexagonal head screw	piastra superiore di sicurezza security upper plate				binari portanti spessore 5 mm rail	dado fissaggio binari rail nut
AVTEAP	APMRSP				ABINP	ADESP
M   e mm	a mm	F mm	c mm	S mm	b mm   h mm	M   Ø d mm
<b>AVTEAP<sub>5</sub></b>	<b>APMRSP<sub>5</sub></b>					
M16   110	60	152	122	10	40   22	M16   20

## Piastre doppie per serie pesante Double plates for heavy duty series

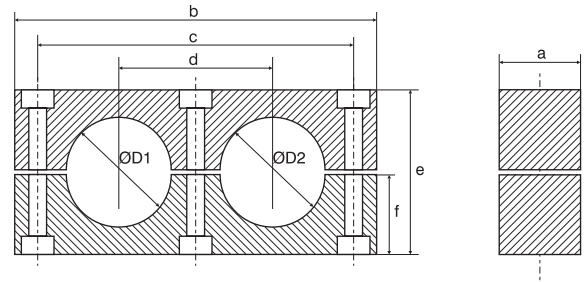


gruppo - group	piastra superiore doppia double upper plate					
	APSPD					
	a mm	f mm	s mm	c mm	p mm	d mm
1	<b>APSPD<sub>1</sub></b>					
	60	56	8	33	31	11
2	<b>APSPD<sub>2</sub></b>					
	60	70	8	45	31	11
3	<b>APSPD<sub>3</sub></b>					
	60	85	8	60	31	11
4	<b>APSPD<sub>4</sub></b>					
	90	116	10	90	46	14
5	<b>APSPD<sub>5</sub></b>					
	120	153	10	122	61	18

gruppo - group	piastra inferiore doppia double lower plate					
	APINPD					
	a mm	f mm	s mm	c mm	p mm	m
1	<b>APINPD<sub>1</sub></b>					
	60	74	8	33	31	M10
2	<b>APINPD<sub>2</sub></b>					
	60	86	8	45	31	M10
3	<b>APINPD<sub>3</sub></b>					
	60	100	8	60	31	M10
4	<b>APINPD<sub>4</sub></b>					
	90	140	10	90	46	M12
5	<b>APINPD<sub>5</sub></b>					
	120	180	10	122	61	M16

## Collari doppi serie pesante in polipropilene o poliammide autoestinguente

## Heavy duty double clamps in polypropylene and self-extinguishing polyamid



gruppo - group	diametro tubo pipe diameter		tipo di collare clamp type		dimensioni in mm dimension in mm					
	ØD1/ØD2 mm	pollici/inches G Ø	<b>AMD.P</b> polipropilene polypropylene	<b>MMD.P</b> polyamide self-extinguishing	a	b	c	d	e	f
4	19/19		AMD.P <sub>4</sub> 19/19	MMD.P <sub>4</sub> 19/19	30	115	90	45	48	24
	20/20		AMD.P <sub>4</sub> 20/20	MMD.P <sub>4</sub> 20/20						
	21,3/21,3	1/2 / 1/2	AMD.P <sub>4</sub> 21,3/21,3	MMD.P <sub>4</sub> 21,3/21,3						
	22/22	7/8 / 7/8	AMD.P <sub>4</sub> 22/22	MMD.P <sub>4</sub> 22/22						
	25,4/25,4		AMD.P <sub>4</sub> 25,4/25,4	MMD.P <sub>4</sub> 25,4/25,4						
	26,9/26,9	3/4 / 3/4	AMD.P <sub>4</sub> 26,9/26,9	MMD.P <sub>4</sub> 26,9/26,9						
5	32/32	3" / 3 1/2"	AMD.P <sub>5</sub> 32/32	MMD.P <sub>5</sub> 32/32	30	144	120	60	60	30
	33,7/33,7		AMD.P <sub>5</sub> 33,7/33,7	MMD.P <sub>5</sub> 33,7/33,7						
	38/38	3 1/2" / 4"	AMD.P <sub>5</sub> 38/38	MMD.P <sub>5</sub> 38/38						
	40/40	4 1/4"	AMD.P <sub>5</sub> 40/40	MMD.P <sub>5</sub> 40/40						
	42/42	4" / 4 1/2"	AMD.P <sub>5</sub> 42/42	MMD.P <sub>5</sub> 42/42						

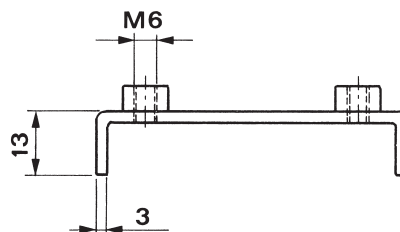
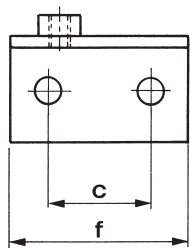
coppia collare clamp body (2 halves)		piastra inferiore lower plate					piastra superiore cover plate					vite a testa esagonale hexagonal head screw			
<b>AMD.P</b> polipropilene polypropylene	<b>MMD.P</b> polyamide self-extinguishing	<b>APINDP</b>					<b>APSDP</b>					<b>AVTDP</b>			
		2c	Ø m	Ø D	s	f	a	2c	Ø m	s	b	a	M	e	
4	AMD.P <sub>4</sub> 19/19 C	MMD.P <sub>4</sub> 19/19 C	<b>APINDP<sub>4</sub></b>					<b>APSDP<sub>4</sub></b>					<b>AVTDP<sub>4</sub></b>		
	AMD.P <sub>4</sub> 20/20 C	MMD.P <sub>4</sub> 20/20 C	90	10	18	8	130	30	90	11	8	115	30	M10	60
	AMD.P <sub>4</sub> 21,3/21,3 C	MMD.P <sub>4</sub> 21,3/21,3 C													
	AMD.P <sub>4</sub> 22/22 C	MMD.P <sub>4</sub> 22/22 C													
	AMD.P <sub>4</sub> 25,4/25,4 C	MMD.P <sub>4</sub> 25,4/25,4 C													
	AMD.P <sub>4</sub> 26,9/26,9 C	MMD.P <sub>4</sub> 26,9/26,9 C													
5	AMD.P <sub>5</sub> 32/32 C	MMD.P <sub>5</sub> 32/32 C	<b>APINDP<sub>5</sub></b>					<b>APSDP<sub>5</sub></b>					<b>AVTDP<sub>5</sub></b>		
	AMD.P <sub>5</sub> 33,7/33,7 C	MMD.P <sub>5</sub> 33,7/33,7 C	120	10	18	8	160	30	120	11	8	144	30	M10	70
	AMD.P <sub>5</sub> 38/38 C	MMD.P <sub>5</sub> 38/38 C													
	AMD.P <sub>5</sub> 40/40 C	MMD.P <sub>5</sub> 40/40 C													
	AMD.P <sub>5</sub> 42/42 C	MMD.P <sub>5</sub> 42/42 C													

\* La produzione standard è di colore verde, colore nero su richiesta. / Standard production in green, black color on request.

## Piastre speciali per serie standard Special plates for standard series

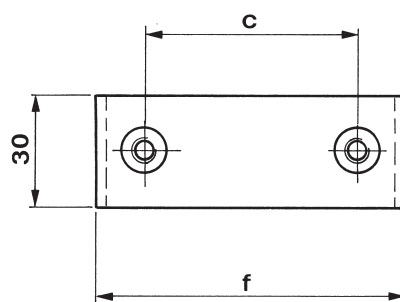
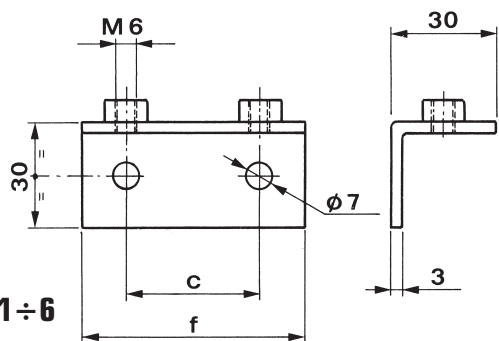
gruppo  
group

**0**



gruppo  
group

**1 ÷ 6**



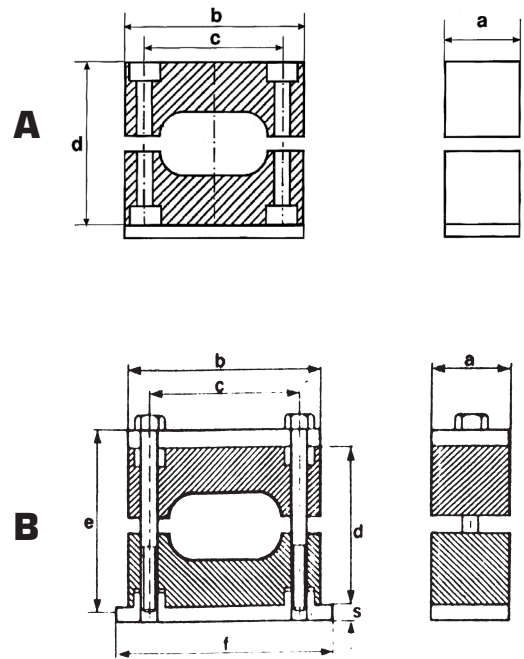
gruppo - group	piastra ad angolo angled plate	
	<b>APINL</b>	
	c mm	f mm
0	<b>APINL<sub>0</sub></b>	
	14	32
1	<b>APINL<sub>1</sub></b>	
	20	42
2	<b>APINL<sub>2</sub></b>	
	26	48
3	<b>APINL<sub>3</sub></b>	
	33	55
4	<b>APINL<sub>4</sub></b>	
	40	62
5	<b>APINL<sub>5</sub></b>	
	52	74
6	<b>APINL<sub>6</sub></b>	
	66	88

gruppo - group	piastra a ponte bridge plate	
	<b>APINB</b>	
	c mm	f mm
0	<b>APINB<sub>0</sub></b>	
	-	-
1	<b>APINB<sub>1</sub></b>	
	20	48
2	<b>APINB<sub>2</sub></b>	
	26	54
3	<b>APINB<sub>3</sub></b>	
	33	62
4	<b>APINB<sub>4</sub></b>	
	40	71
5	<b>APINB<sub>5</sub></b>	
	52	85
6	<b>APINB<sub>6</sub></b>	
	66	98

## Collari serie standard per tubi gemellati

### Standard series clamps for twin tubes

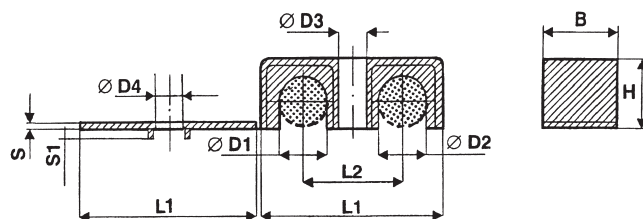
- A:** senza piastra superiore  
without upper plate
- B:** con piastra superiore (a richiesta)  
with upper plate (on request)



diametro tubo pipe diameter		tipo di collare clamp type			dimensioni in mm dimension in mm				
mm	pollici inches	polipropilene polypropylene	polyamide self-extinguishing	gomma rubber	a	b	c	d	viti screw
12	1/4	<b>TBP 3 1/4</b>	<b>TBM 3 1/4</b>	<b>TBR 3 1/4</b>	30	48	33	35	M6 x 30
14	5/16	<b>TBP 4 5/16</b>	<b>TBM 4 5/16</b>	<b>TBR 4 5/16</b>	30	52	40	42	M6 x 35
16	3/8	<b>TBP 4 3/8</b>	<b>TBM 4 3/8</b>	<b>TBR 4 3/8</b>	30	52	40	42	M6 x 35
20	1/2	<b>TBP 5 1/2</b>	<b>TBM 5 1/2</b>	<b>TBR 5 1/2</b>	30	68	52	58	M6 x 50

## Elementi di fissaggio per tubi rigidi, flessibili e cavi elettrici

### Clamps for hoses, pipes, tubes and cables



gruppo - group	diametro tubo D1 - D2 D1 - D2 pipe diameter		tipo collare clamp type	dimensioni in mm dimensions in mm										colore colour
	Ø mm	pollici inches Ø O.D.	<b>ACSD</b> polipropilene polypropylene	L1	L2	B	H	S	S1	D1	D2	D3	D4	
2	06 - 06	1/4 - 1/4	ACSD 06 - 06	38	22	16	14,2	2	3	6	6	6,9	7	bianco nero verde
	08 - 08	1/4 - 1/4	ACSD 08 - 08											white black green
	10 - 10	3/8 - 3/8	ACSD 10 - 10	38	22	16	14,5	2	3	10	10	6,9	7	bianco nero verde
	12 - 12	3/8 - 3/8	ACSD 12 - 12											white black green
3	15 - 15	5/8 - 5/8	ACSD 15 - 15	53	31	20	22,5	2	3	15	15	6,9	7	bianco nero verde  white black green
4	19 - 19	3/4 - 3/4	ACSD 19 - 19	70	38	20	30	2	3	19	19	6,9	7	bianco nero verde  white black green

**Applicazioni:** Oleodinamica e pneumatica, Strumentazione, Tecnologia automobilistica, Industria Macchine Utensili, Macchine per plastica, Macchine movimento terra, Macchine agricole, Lubrificazione, Ingegneria meccanica, ecc.,.

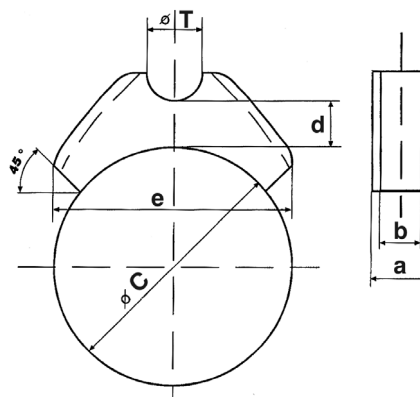
**Applications:** Oleodynamics and pneumatics, Instrumentation and Automotive Technology, Machine Tool Industry, Gooseneck machines, Earth moving machines, Farm machines, Lubrification, Mechanical Engineering, and so on.

## Supporto tra tubo e cilindro

### Pipe clamp for cylinder

materiale - material: **PVC**

Δ Shore = **60°C - 284°F**



gruppo - group	codice code	Ø cilindro C - Ø cylinder C		Ø tubo T - Ø tube T		dimensioni in mm dimensions in mm			
		mm	inc. O.D.	mm	inc. O.D.	a	b	d	e
1	STF 12/50-70	50 ÷ 70	1,96 ÷ 2,75	12	0,47	23	14	12	72
	STF 12/60-80	60 ÷ 80	2,36 ÷ 3,15						
	STF 12/70-90	70 ÷ 90	2,75 ÷ 3,54						
	STF 12/80-100	80 ÷ 100	3,15 ÷ 3,94						
	STF 12/90-110	90 ÷ 110	3,54 ÷ 4,33						
	STF 12/100-120	100 ÷ 120	3,94 ÷ 4,72						
	STF 12/110-130	110 ÷ 130	4,33 ÷ 5,12						
	STF 12/125-150	125 ÷ 150	4,92 ÷ 5,90						
	STF 12/145-170	145 ÷ 170	5,71 ÷ 6,69						
	STF 12/165-200	165 ÷ 200	6,49 ÷ 7,87						
2	STF 20/50-70	50 ÷ 70	1,96 ÷ 2,75	20	0,78	23	14	12	72
	STF 20/60-80	60 ÷ 80	2,36 ÷ 3,15						
	STF 20/70-90	70 ÷ 90	2,75 ÷ 3,54						
	STF 20/80-100	80 ÷ 100	3,15 ÷ 3,94						
	STF 20/90-110	90 ÷ 110	3,54 ÷ 4,33						
	STF 20/100-120	100 ÷ 120	3,94 ÷ 4,72						
	STF 20/110-130	110 ÷ 130	4,33 ÷ 5,12						
	STF 20/125-150	125 ÷ 150	4,92 ÷ 5,90						
	STF 20/145-170	145 ÷ 170	5,71 ÷ 6,69						
	STF 20/165-200	165 ÷ 200	6,49 ÷ 7,87						
3	STF 25/50-70	50 ÷ 70	1,96 ÷ 2,75	25	0,98	23	14	12	72
	STF 25/60-80	60 ÷ 80	2,36 ÷ 3,15						
	STF 25/70-90	70 ÷ 90	2,75 ÷ 3,54						
	STF 25/80-100	80 ÷ 100	3,15 ÷ 3,94						
	STF 25/90-110	90 ÷ 110	3,54 ÷ 4,33						
	STF 25/100-120	100 ÷ 120	3,94 ÷ 4,72						
	STF 25/110-130	110 ÷ 130	4,33 ÷ 5,12						
	STF 25/125-150	125 ÷ 150	4,92 ÷ 5,90						
	STF 25/145-170	145 ÷ 170	5,71 ÷ 6,69						
	STF 25/165-200	165 ÷ 200	6,49 ÷ 7,87						


**Applicazioni:** Oleodinamica e pneumatica - Macchine utensili - Macchine movimento terra - Macchine agricole - Industria meccanica - Industria in generale - ecc.

**Applications:** oleodynamic and pneumatic - Machines tools - Earth-moving machines - Farm machines - Mechanical and metallurgical industry - Oil industry - and so on.



# Caratteristiche materiali

## Materials properties

	Metodo di prova Test method	Unità di misura Units	Polipropilene Copolimero Metereophasic Copolymers	Poliamide 6-6 Polyamide 6-6	Gomma termoplastica Thermoplastic Rubber	Alluminio Aluminium
<b>FISICHE</b> <b>Physical</b>						
Peso specifico Specific gravity	ASTM D 792	g/cm <sup>3</sup>	0,9	1,34	0,964	
Assorbimento d'acqua (24h a 23°C in immersione) Water absorption (24h at 23°C immersion)	ASTM D 570	%		1		
Ritiro lineare allo stampaggio Mould shrinkage	ASTM D 955	%	1,5 ÷ 2,4	0,2 ÷ 0,5	0,4 ÷ 0,8	
<b>MECCANICHE</b> <b>Mechanical</b>						
Carico di snervamento a trazione Tensile strenght at yield	ASTM D 638	N/mm <sup>2</sup>	27			
Carico di rottura a trazione Tensile strenght	ASTM D 638	N/mm <sup>2</sup>		150	1400	170 ÷ 220
Modulo elastico a trazione Tensile modulus	ASTM D 638	N/mm <sup>2</sup>	1400	8200	530	68000 ÷ 78000
Allungamento alla rottura Ultimate elongation	ASTM D 638	%	12	3	750	
Resistenza all'urto con intaglio IZOD 6.4 mm IZOD impact strenght notched 6.4 mm	ASTM D 256	J/m	85	70	71 SHORE A	
Durezza Rockwell, scala R + L Rockwell hardness, scale R + L	ASTM D 785	—	R84	(L) 150		
<b>TERMICHE</b> <b>Thermal</b>						
Temperatura di inflessione 1.82 N mm <sup>2</sup> H.D.T. - heat distorsion temperature 1.82 N mm <sup>2</sup>	ASTM D 648	°C	88	240	70 ÷ 90	
Temperatura di fusione Melting point	ASTM D 789	°C	150	258		380
Coefficiente di espansione termico lineare Coefficient of linear thermal expansion	ASTM D 696	°C		2,5 - 10 <sup>5</sup>		24 - 10 <sup>-5</sup> (1,6mm: nero/black)
Autoestinguenza Flammability	UL 94	—		V-0  (1,6mm: nero/black)		
Temperatura max. d'esercizio Max. exercise temperature	—	°C	-30 +90	-40 +180	-40 +80	+350
<b>ELETTRICHE</b> <b>Electrical</b>						
Rigidità dielettrica - spessore 3 mm Dielectric strenght - thickness 3 mm	ASTM D 149	kV/mm		20		20
Costante dielettrica a 1 kHz Dielectric constant, 1kHz	ASTM D 150	—		4,5		
Resistività di volume Volume resistivity	ASTM D 257	Phm. cm <sup>2</sup>	10 <sup>18</sup>	4,5 - 10 <sup>15</sup>		4,5 - 10 <sup>15</sup>
Fattore di dissipazione a 1 kHz Dissipation factor, 1 kHz	DIN 53483	—		0,018		
Resistenza alle correnti striscianti KA sol. A Tracking resistance KA sol. A	DIN 53480	—	3C	KA 3b	KA 3b	KA 3b
Resistenza alle correnti striscianti KB sol. A Tracking resistance KB sol. A	DIN 53480	V	> 680	450		
Resistenza alle correnti striscianti KC sol. F Tracking resistance KC sol. F	DIN 53480	V	> 600	450		450

AEGI CLAMPS declina ogni tipo di responsabilità attinente al prodotto ad eccezione dei vizi derivanti da difetto di fabbricazione. I valori di riferimento, menzionati nel catalogo, devono essere considerati indicativi e non assoluti.

AEGI CLAMPS si riserva di apportare tutte le modifiche che riterrà opportune senza obbligo di preavviso.