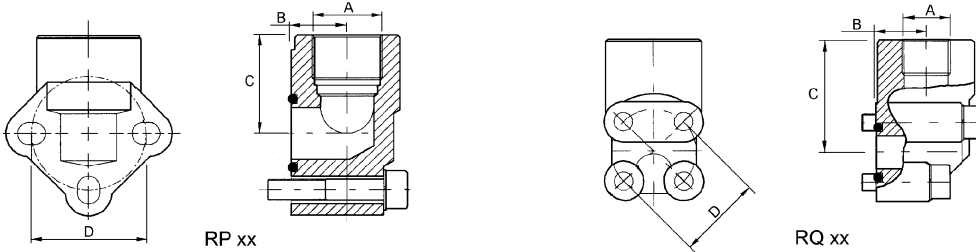
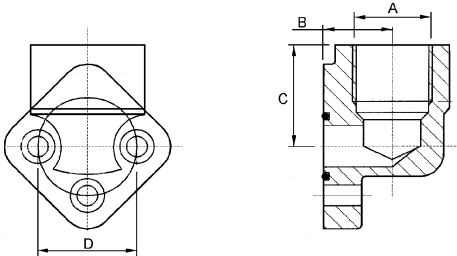


**Haakse flenzen ( aluminium )**  
**Brides coudées ( aluminium )**  
**Flanges 90° ( aluminium )**



Type	Groep / Groupe	BSP	D mm			B mm	C mm	O-Ring
RQ 38-30	1	3/8"	30	M6x30	4	18	40	15.88x2.62
RQ 12-30	1	1/2"	30	M6x45	4	18	40	15.88x2.62
RF 201	2	3/8"	30	M6x35	3	26	30	15.88x2.62
RF 207	2	1/2"	30	M6x35	3	26	30	15.88x2.62
RF 210	2+3	1/2"	40	M8x45	3	31	40	23.81x2.62
RF 213	2+3	3/4"	40	M8x45	3	31	40	23.81x2.62
RF 247	3	3/4"	51/56	M10x60	3	43	46	29.74x3.53
RF 214	3	1"	51/56	M10x60	3	43	46	29.74x3.53
RF 256	3	1 1/4"	62	M12x35	2	-	57	

**Haakse flenzen staal, Brides coudées acier , Flange 90° Steel**



Type	Groep / Groupe / Group	A BSP	D mm			B mm	C mm	O-Ring
RPG 1-12	2	1/2"	30	M6x20	3	17.5	26	15.88x2.62
RPG 2-12	2+3	1/2"	40	M8x25	3	21	36	23.81x2.62
RPG 2-34	2+3	3/4"	40	M8x25	3	21	36	23.81x2.62
RPA 3-34	3	3/4"	51	M10x30	3	27	43	29.74x3.53

**Flenzen staal 315 bar, Brides acier 315 bar , Flange Steel 315 bar**

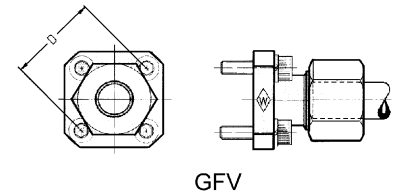


Type	Groep, Groupe, Group	BSP			
F1	1+2	3/8"	30	M 6x20	4
F2	2+3	1/2"	40	M 8x25	4
F3a	2+3	3/4"	51	M10x30	4

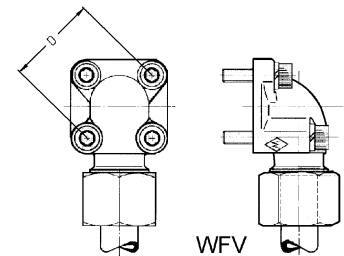


**Pompflens met Profielring**  
**Union simple à bride en équerre**  
**Pumpflange for tubefitting**

Type	Diam. Buis Diam. Tube			Max. bar
GFV 12L 35	12	35	M6x22	315
GFV 15L 35	15	35	M6x22	250
GFV 15L 40	15	40	M6x22	100
GFV 18L 40	18	40	M6x22	100
GFV 22 L 40	22	40	M6x22	100
GFV 28 L 40	28	40	M6x22	100
GFV 20 S-55	20	55	M8x25	250
WFV 12L 35	12	35	M6x22/M6x35	315
WFV 15L 35	15	35	M6x22/M6x35	250
WFV 16S 35	16	35	M6x22/M6x40	315
WFV 15L 40	15	40	M6x22	100
WFV 18L 40	18	40	M6x22	100
WFV 22L 40	22	40	M6x22	100
WFV 28 L 40	28	40	M6x22/M6x50	100
WFV 35 L 40	35	40	M6x22/M6x60	100
WFV 20 S 40	20	40	M6x22/M6x45	250
WFV 22 L 55	22	55	M8x25/M8x50	100
WFV 35 L 55	35	55	M8x25/M8x60	100
WFV 42 L 55	42	55	M8x25/M8x70	100
WFV 20 S 55	20	55	M8x25/M8x50	250
WFV 25 S 55	25	55	M8x25/M8x55	250
WFV 30 S 55	30	55	M8x25/M8x50	250



GFV



WFV